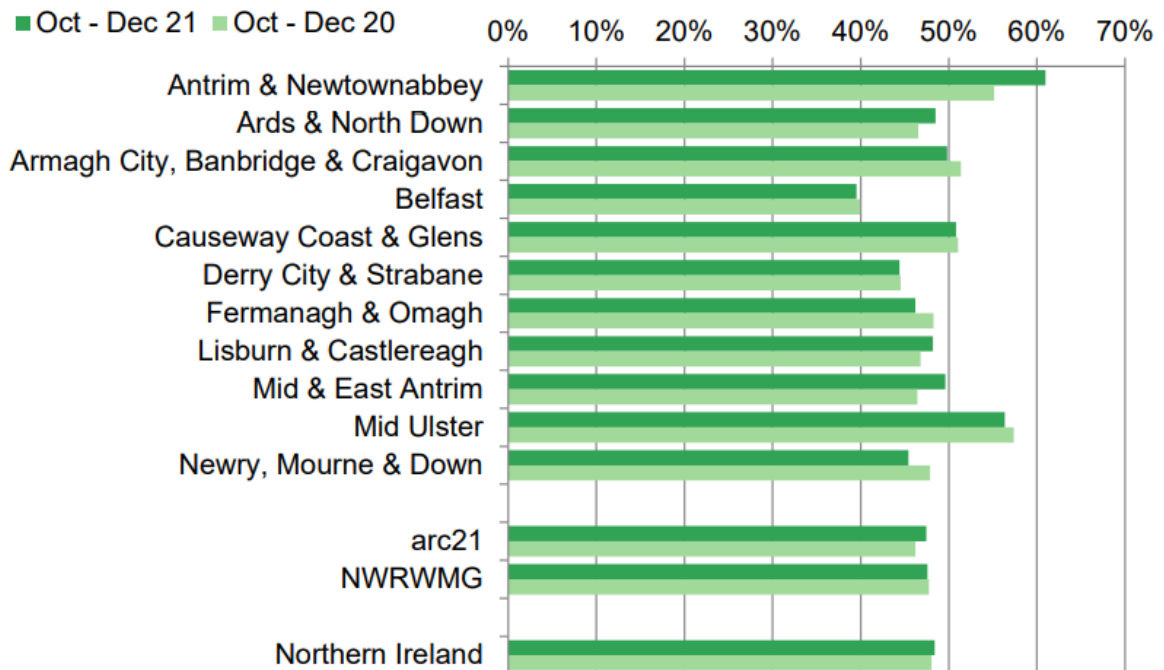


Report on	Northern Ireland Local Authority Collected Municipal Waste Management (LACMW) Report for October to December 2021
Date of Meeting	10 th May 2022
Reporting Officer	Mark McAdoo, Assistant Director of Environmental Services
Contact Officer	Mark McAdoo, Assistant Director of Environmental Services

Is this report restricted for confidential business? If 'Yes', confirm below the exempt information category relied upon	Yes	
	No	X

1.0	Purpose of Report
1.1	To update members on the Council's performance in relation to recycling and landfill diversion targets as outlined in the NIEA Northern Ireland Local Authority Waste Management Statistics Report for Quarter 3 of 2021/22 from October to December.
2.0	Background
2.1	<p>The above (provisional) report was published on 28th April 2022 by the Department of Agriculture, Environment and Rural Affairs (DAERA). The data in the report is based on quarterly returns made to WasteDataFlow, a web-based system, used by all local authorities throughout the UK to report on local authority collected municipal waste (LACMW). This publication provides information on local authority collected municipal waste from household and non-household sources and recycling and landfill rates in Northern Ireland.</p> <p>Headline figures are shown in the attached infographic with the full report available via the below link:</p> <p>https://www.daera-ni.gov.uk/publications/northern-ireland-local-authority-collected-municipal-waste-management-statistics-october-december-2021</p>

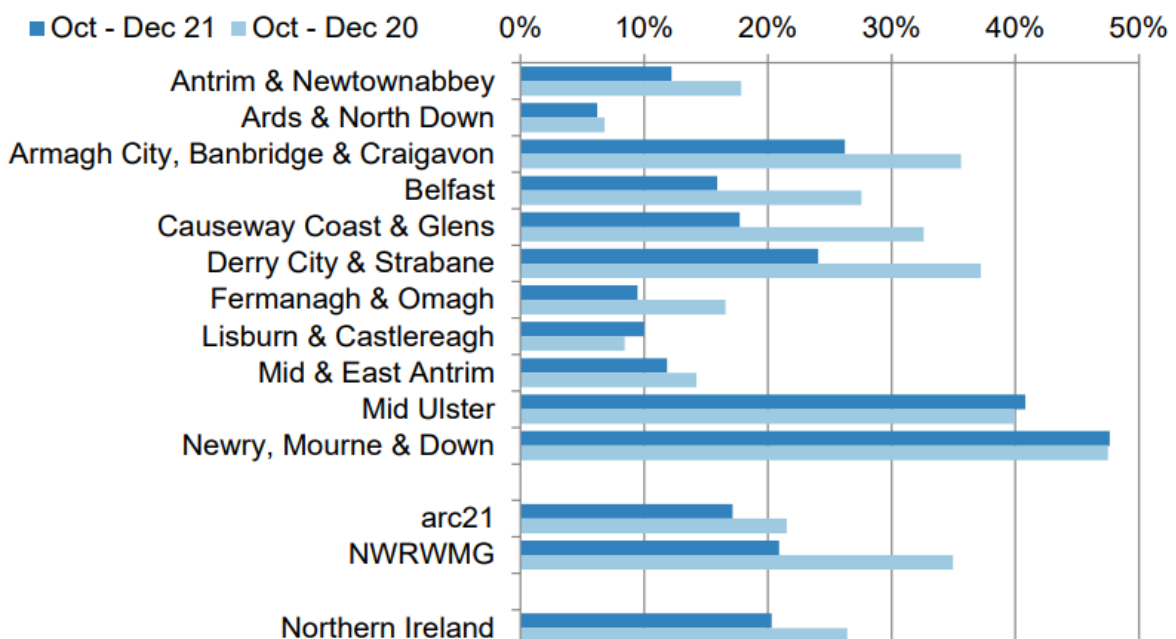
3.0	Main Report
3.1	<p>Key Points:</p> <ul style="list-style-type: none"> • Northern Ireland’s councils collected 244,715 tonnes of waste during October to December 2021, a 4.4 per cent decrease compared to October to December 2020. • During October to December 2021, 47.7 per cent of waste collected by councils was sent for recycling, similar to the recycling rate for October to December 2020. • The landfill rate for waste collected by councils was 30.0 per cent in October to December 2021, a fall from 75.4 per cent in October to December 2006, but higher than the 23.3 per cent recorded during October to December 2020. • Just over a fifth (20.3 per cent) of waste arisings were sent for energy recovery in October to December 2021, lower than the 26.4 per cent reported in October to December 2020, but an increase from the 0.5 per cent rate during the same quarter in 2009. • Household waste accounted for 88.3 per cent of all waste collected during this period. • The recycling rate for household waste was 48.4 per cent, similar to 48.0 per cent in October to December 2020. The landfill rate for household waste was 29.2 per cent in October to December 2021, an increase from 23.0 per cent recorded during the same quarter of 2020
3.2	<p>Waste to Recycling:</p> <p>There were 116,633 tonnes of waste sent for preparing for reuse, dry recycling and composting (referred to as ‘recycling’ for the rest of this section) between October and December 2021. The waste recycling rate was 47.7 per cent. This was similar to the 47.3 per cent of waste sent for recycling between October and December 2020.</p> <p>The household recycling rate for Mid Ulster for the quarter was 56.3 per cent (a decrease of 1.1 per cent compared to October to December 2020). This was the second highest rate achieved by any of the eleven Councils for the quarter (as illustrated in the graph overleaf):</p>



3.3 Waste to Energy Recovery

Between October and December 2021, 49,665 tonnes of waste arisings were sent for energy recovery. This produced a waste energy recovery rate of 20.3 per cent, lower than the 26.4 per cent rate reported for the same period in 2020. For each period, the majority of energy recovery was from mixed residual waste, with a smaller proportion from specific streams, e.g. wood.

The energy recovery rate for Mid Ulster for the quarter was 40.8 per cent (an increase of 0.8 per cent compared to October to December 2020). This was the second highest rate achieved by any of the eleven Councils (as illustrated in the graph below):

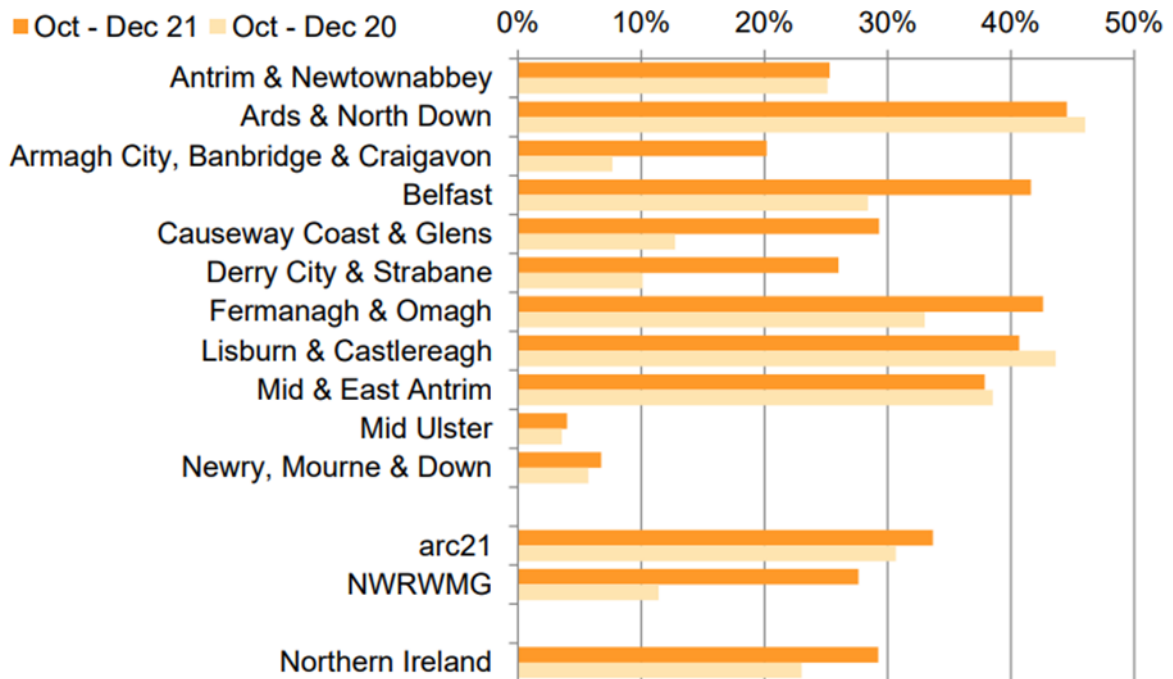


3.4 Waste to Landfill:

The quantity of municipal waste sent to landfill increased by 22.9 per cent, from 59,733 tonnes during October to December 2020 to 73,438 tonnes between October and December 2021. This gave a quarterly landfill rate of 30.0 per cent, higher than the 23.3 per cent recorded during the same quarter of 2020. The latest quarterly landfill rate for household waste only is 29.2 per cent, an increase of 6.2 percentage points on the same three months of 2020.

The long-term trend has seen the October to December household waste landfill rate fall from 73.5 per cent in 2006 to a low of 23.0 per cent in 2020. The 6.2 percentage point increase in October to December 2021 is the first time the household waste landfill rate has increased for this quarter during this time series. Note that the landfill rate exhibits seasonality and the April to June and July to September quarters tend to have lower rates than October to December and January to March. The seasonality stems from the higher level of compostable garden waste arising during spring and summer.

The landfill rate for Mid Ulster for the quarter was 4.0 per cent of household waste (an increase of 0.4 per cent compared to October to December 2020). This was the lowest rate achieved by any of the eleven Councils (as illustrated in the graph below):



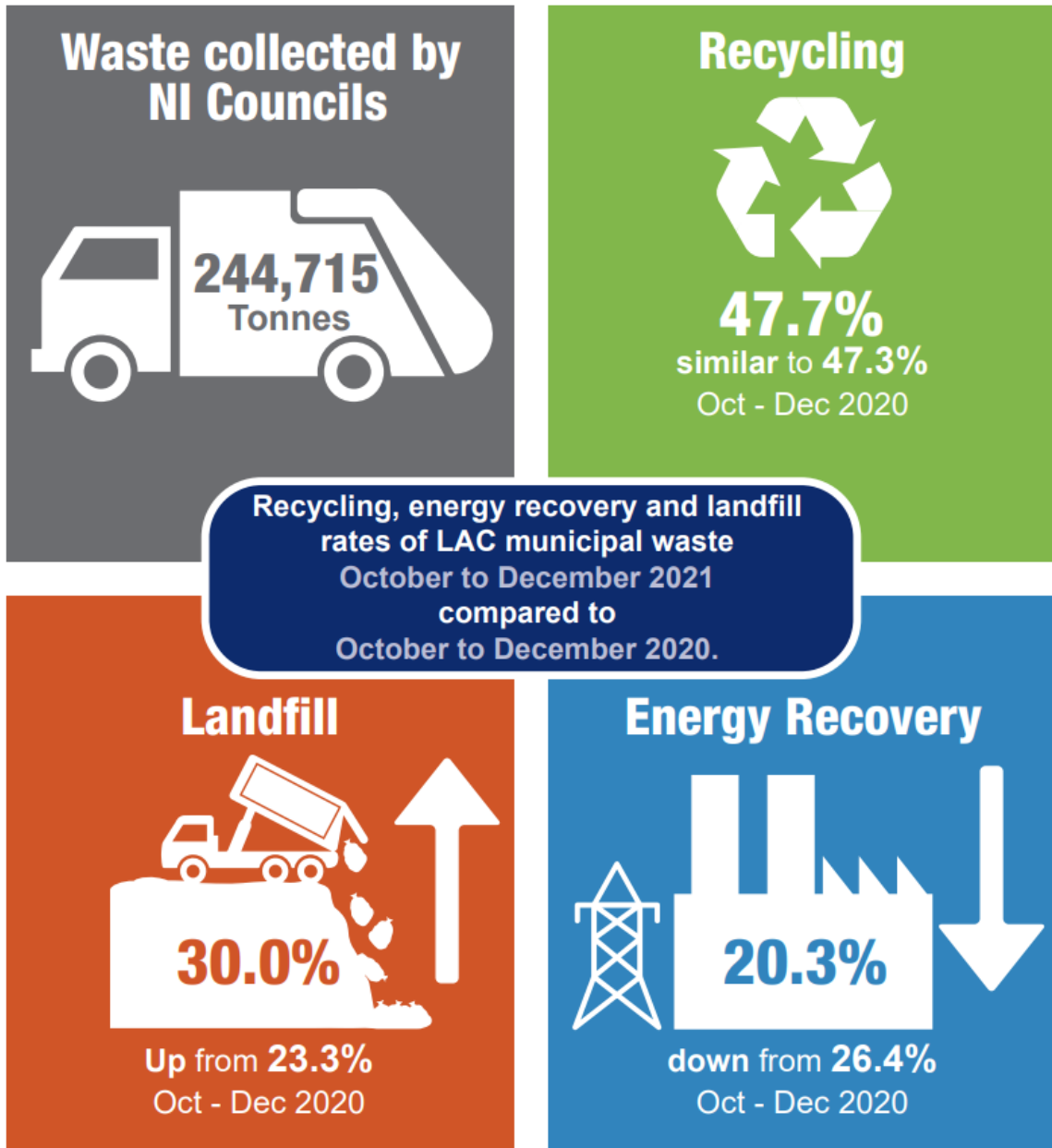
4.0 Other Considerations

4.1 Financial, Human Resources & Risk Implications

Financial:
Failure to meet waste targets could result in penalties.

	<p>Human: A significant amount of time is spent by the Recycling Officers in gathering, collating and submitting the necessary data for quarterly WasteDataFlow returns.</p>
	<p>Risk Management: Failure to meet waste targets would result in reputational damage.</p>
4.2	<p>Screening & Impact Assessments</p>
	<p>Equality & Good Relations Implications: None</p>
	<p>Rural Needs Implications: None</p>
5.0	<p>Recommendation(s)</p>
5.1	<p>Members are asked to note the performance of the Council as outlined in this report.</p>
6.0	<p>Documents Attached & References</p>
6.1	<p>Local Authority Collected Municipal Waste Infographic Q3 2021-22.</p>

Waste Collections by NI Councils October to December 2021



Sustainability at the heart of a living, working, active landscape valued by everyone.