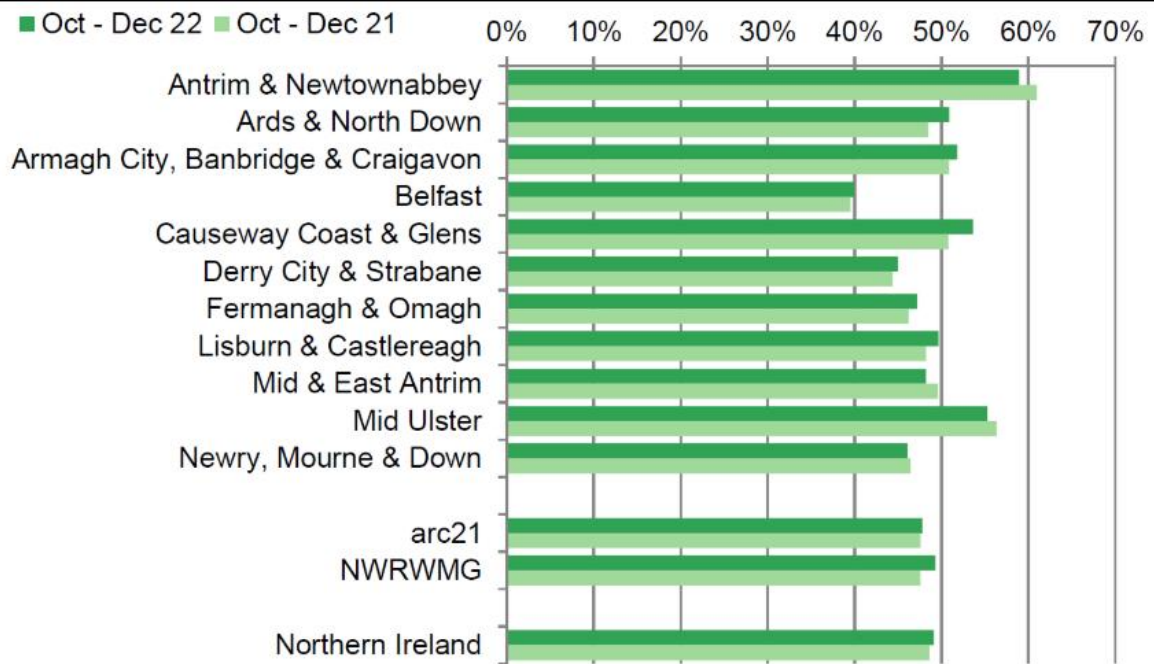


Report on	Northern Ireland Local Authority Collected Municipal Waste Management (LACMW) Report for October to December 2022
Date of Meeting	14 th June 2023
Reporting Officer	Mark McAdoo, Assistant Director, Environmental Services
Contact Officer	Karl McGowan, Waste and Sustainable Development Manager

Is this report restricted for confidential business? If 'Yes', confirm below the exempt information category relied upon	Yes	
	No	X

1.0	Purpose of Report
1.1	To update members on the Council's performance in relation to recycling and landfill diversion targets as outlined in the NIEA Northern Ireland Local Authority Waste Management Statistics Report for Quarter 3 of 2022/23 from October to December.
2.0	Background
2.1	<p>The above (provisional) report was published on the 27th April 2023 by the Department of Agriculture, Environment and Rural Affairs (DAERA). The data in the report is based on quarterly returns made to WasteDataFlow, a web-based system, used by all local authorities throughout the UK to report on local authority collected municipal waste (LACMW). This publication provides information on local authority collected municipal waste from household and non-household sources and recycling and landfill rates in Northern Ireland.</p> <p>Headline figures are shown in the attached infographic with the full report available via the below link:</p> <p>https://www.daera-ni.gov.uk/publications/northern-ireland-local-authority-collected-municipal-waste-management-statistics-october-december-2022</p>

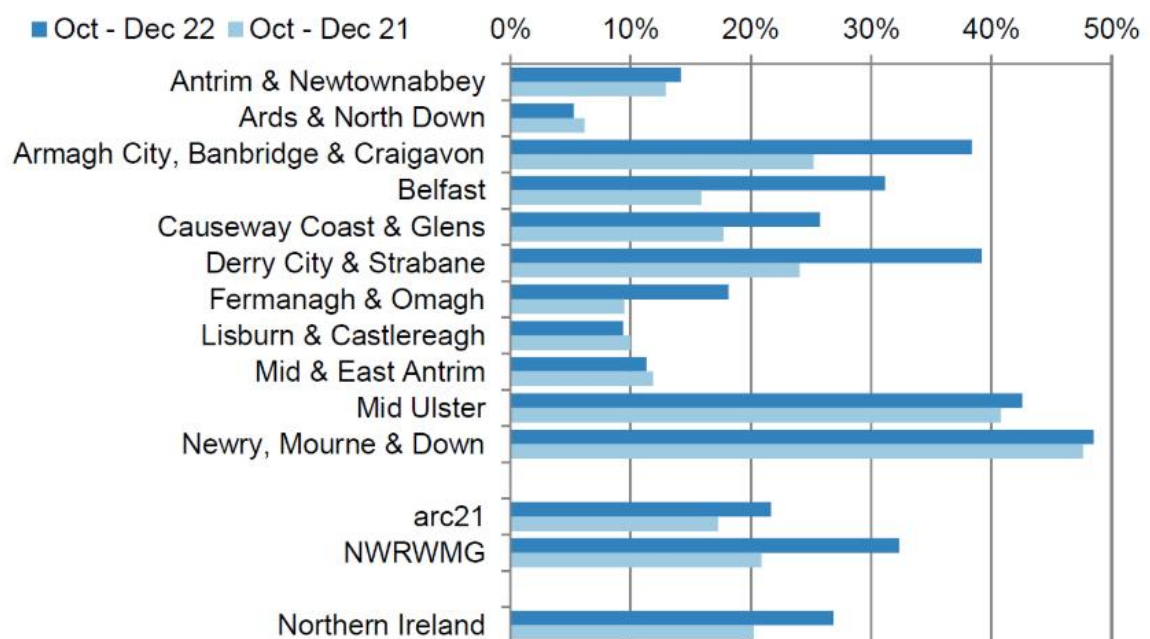
3.0	Main Report
3.1	<p>Key Points:</p> <ul style="list-style-type: none"> • Northern Ireland’s councils collected 230,755 tonnes of waste during October to December 2022, a 5.7 per cent decrease compared to October to December 2021. • During October to December 2022, 48.0 per cent of waste collected by councils was sent for recycling, similar to the recycling rate recorded for October to December 2021. • The landfill rate for waste collected by councils was 23.4 per cent in October to December 2022, a fall from both 75.4 per cent in October to December 2006 and 29.9 per cent recorded during October to December 2021. • Over a quarter (26.9 per cent) of waste arisings were sent for energy recovery in October to December 2022 which was higher than the 20.3 per cent reported in October to December 2021. In the longer term, energy recovery rates have increased from 0.5 percent recorded during October to December 2009. • Household waste accounted for 87.0 per cent of all Local Authority collected (LAC) waste during this period. • The recycling rate for household waste was 49.1 per cent in October to December 2022, an increase from the same quarter of 2021. The landfill rate for household waste was 22.6 per cent, which was lower than the landfill rate of 29.2 per cent recorded in October to December 2021.
3.2	<p>Waste to Recycling:</p> <p>There were 110,679 tonnes of municipal waste sent for preparing for reuse, dry recycling and composting between October to December 2022. The waste recycling rate was 48.0 per cent similar to the 47.8 per cent of waste sent for recycling between October to December 2021.</p> <p>The recycling rate for Mid Ulster for the quarter was 55.3 per cent (a decrease of 1.0 per cent compared to October to December 2021). This, however, was still the second highest rate achieved by any of the eleven Councils (as illustrated in the graph overleaf):</p>



3.3 Waste to Energy Recovery

Between October to December 2022, 62,036 tonnes of waste arisings were sent for energy recovery. This produced a waste energy recovery rate of 26.9 per cent, higher than the 20.3 per cent recovery rate reported for the same period in 2021. For each period, the majority of energy recovery was from mixed residual waste, with a smaller proportion from specific streams, e.g. wood.

The energy recovery rate for Mid Ulster for the quarter was 42.6 per cent (an increase of 1.8 per cent compared to October to December 2021). This was the second highest rate achieved by any of the eleven Councils (as illustrated in the graph below):

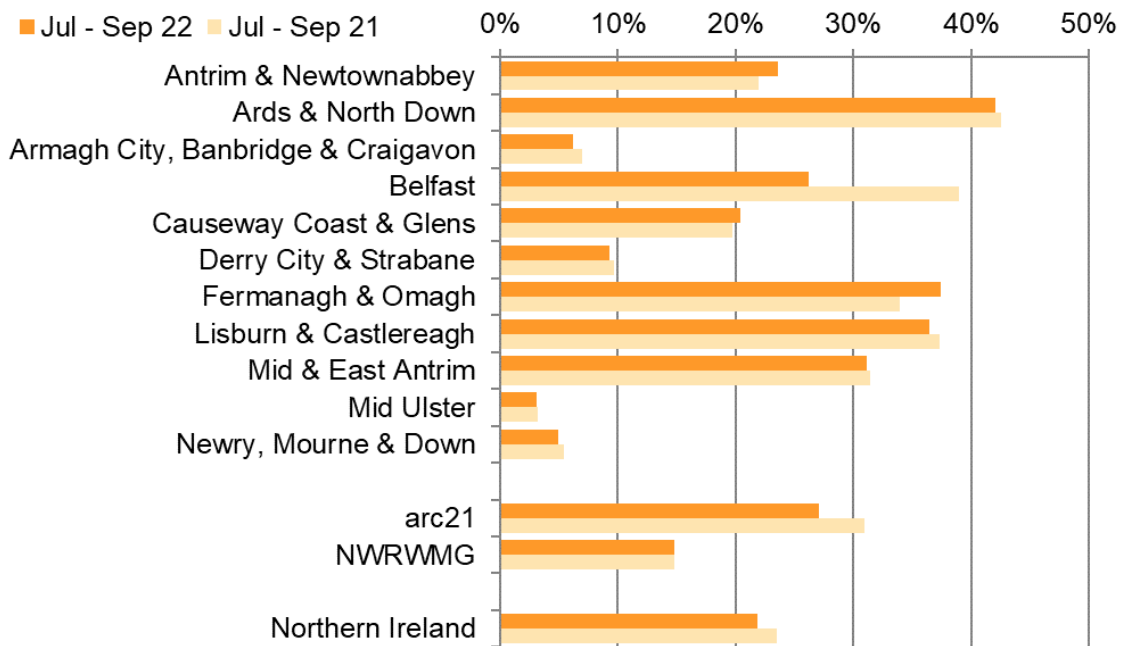


3.4 Waste to Landfill:

The quantity of municipal waste sent to landfill decreased by 26.3 per cent, from 73,239 tonnes during October to December 2021 to 53,969 tonnes between October to December 2022. The quarterly landfill rate for October to December 2022 is 23.4 per cent, lower than the 29.9 per cent recorded during the same quarter of 2021. The latest quarterly landfill rate for household waste only is 22.6 per cent.

The longer-term trend has seen the October to December household waste landfill rate fall from 73.5 per cent in 2006 to a low of 23.0 per cent in 2020. The household waste landfill rate briefly increased in October to December 2021 but has returned to a similar rate as October to December 2020 in the latest quarter. Note that the landfill rate exhibits seasonality and the April to June and July to September quarters tend to have lower rates than October to December and January to March. The seasonality stems from the higher level of compostable garden waste arising during spring and summer.

The landfill rate for Mid Ulster for the quarter was 3.6 per cent of household waste (a decrease of 0.4 per cent compared to October to December 2021). This was the lowest rate achieved by any of the eleven Councils (as illustrated in the graph below):



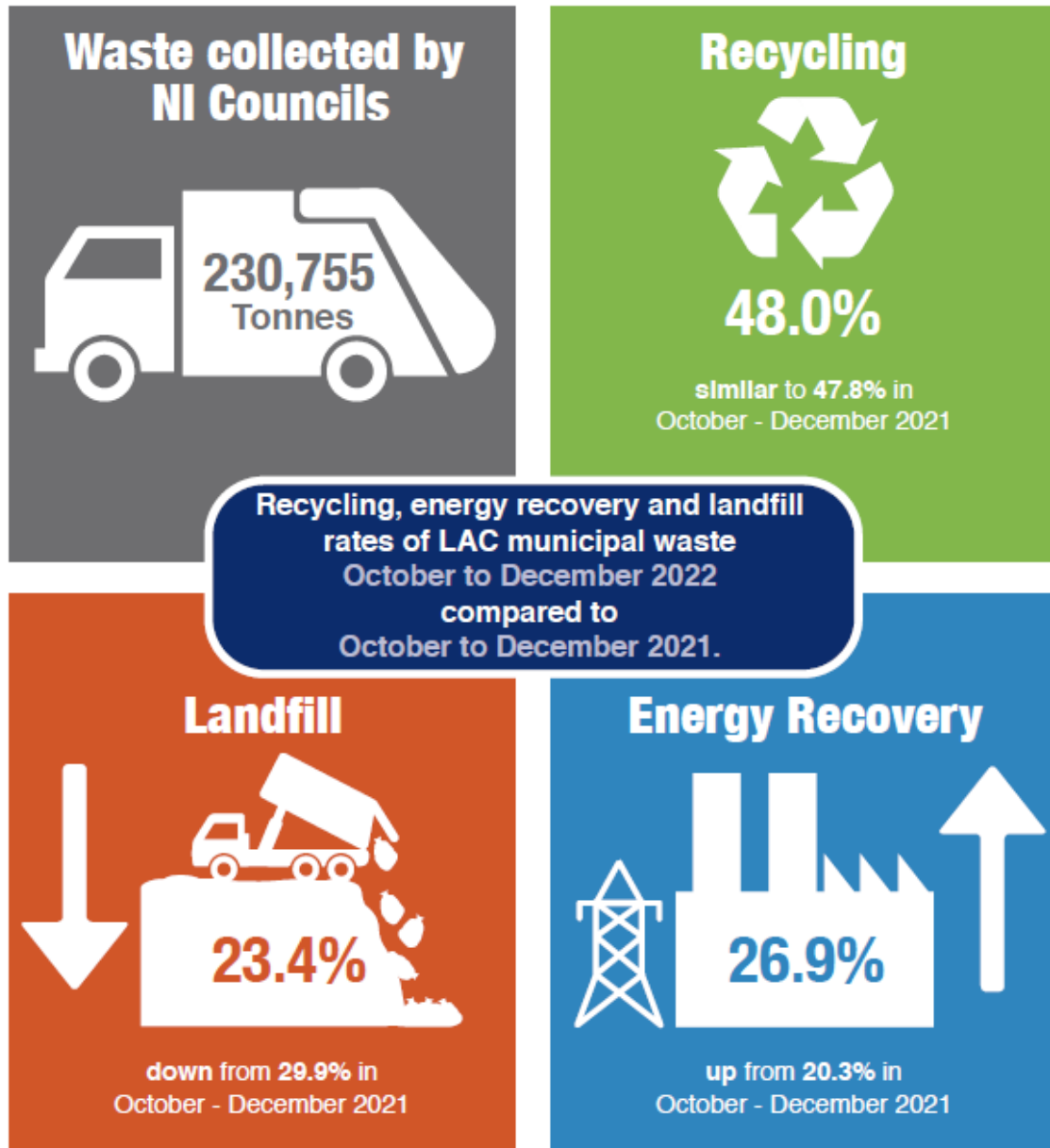
4.0 Other Considerations

4.1 Financial, Human Resources & Risk Implications

Financial:
Failure to meet waste management targets could result in penalties being imposed

	<p>Human: A significant amount of time is spent by the Waste and Recycling Officers in gathering, collating, and submitting the necessary data for quarterly WDF returns.</p>
	<p>Risk Management: Failure to meet waste management targets would result in reputational damage.</p>
4.2	<p>Screening & Impact Assessments</p>
	<p>Equality & Good Relations Implications: None</p>
	<p>Rural Needs Implications: None</p>
5.0	<p>Recommendation(s)</p>
5.1	<p>Members are asked to note the performance of the Council as outlined in this report.</p>
6.0	<p>Documents Attached & References</p>
6.1	<p>Local Authority Collected Municipal Waste Infographic Q3 2022-23.</p>

Waste Collections by NI Councils October to December 2022



Sustainability at the heart of a living, working, active landscape valued by everyone.



Department of
**Agriculture, Environment
and Rural Affairs**
www.daera-ni.gov.uk



**Northern Ireland
Environment
Agency**