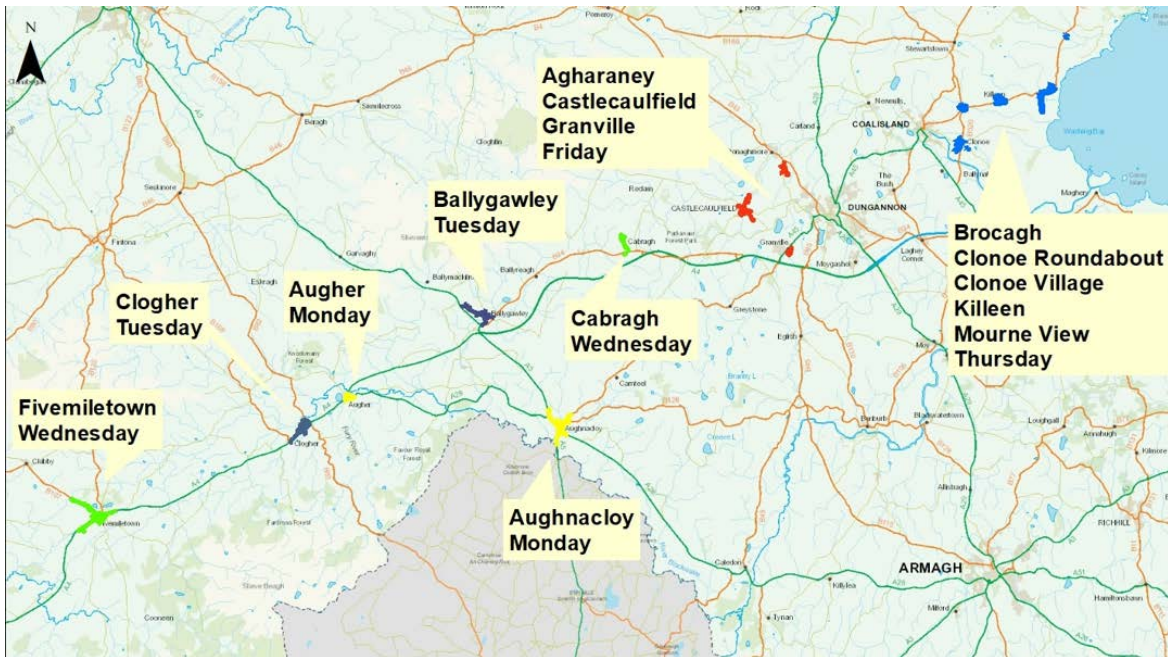
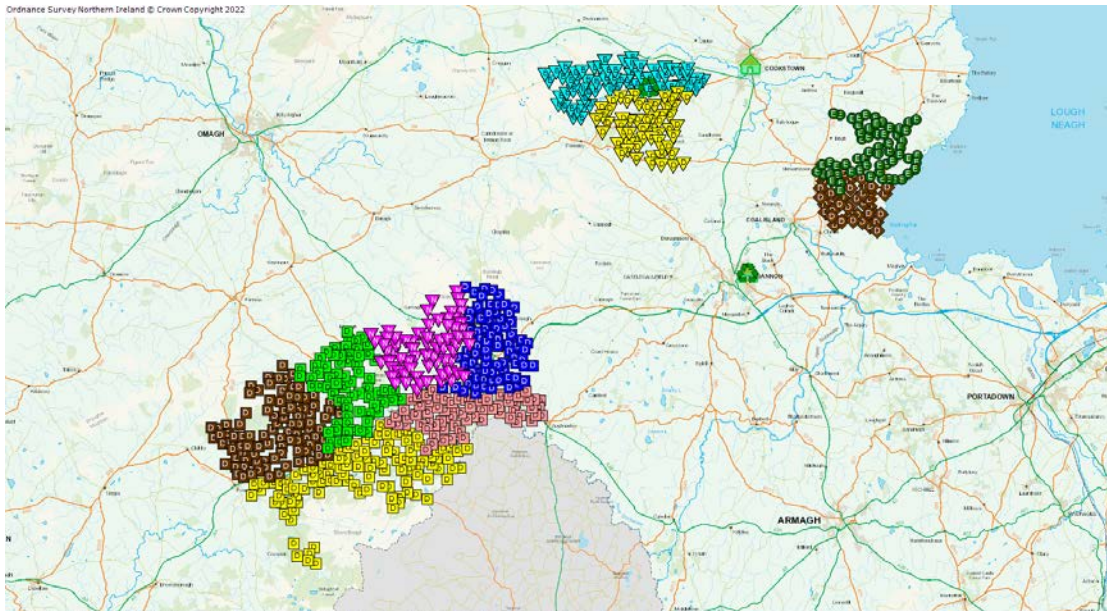


32T Routes



OAV Routes





Dear Resident

A change to your bin collection day and to how we collect your bins.

We are making a change to your bin collection day and to how your bins are collected from week beginning 20th June 2022.

From this week your bins will be collected on a **Tuesday** commencing with your **blue bin and brown bin** on **Tuesday 21 June**. Your **black bin** will be collected **Tuesday 28 June**, this will continue fortnightly. A calendar is enclosed which shows your bin collection sequence for June, July and August 2022.

We will also be using a new type of lorry called a 'one-armed vehicle' to empty all of your bins. This means that we need your help and assistance to present the bins for collection in a slightly different way, as detailed below and shown on the photos overleaf.

In order to help ensure that your bins can be collected as efficiently as possible:

- Make sure the handles of your bin are facing away from the road and towards your property
- Place your bin within 2.5m or 8ft of the roadside
- Make sure your bin isn't tight up against a wall, fence or hedge
- When you have 2 bins being collected on the same day, place them slightly apart (approx. 0.3m or 1ft) to give the vehicle's arm enough space to work correctly.

You can see a short video of a one-armed vehicle collection on our web site, www.midulstercouncil.org

Your assistance in setting your bins out in this way is greatly appreciated and will contribute to a smooth switch to the one-armed vehicle collection system.

Please remember also to continue to leave your bins out by 7.30am on your collection day as the time the lorry arrives at your property is likely to change.

If you have any queries or questions, please don't hesitate to get in touch with us on 03000 132 132, E: environmentalservices@midulstercouncil.org.

Yours sincerely

A handwritten signature in black ink, appearing to read 'D Richardson', is placed over a light grey rectangular background.

David Richardson
Assistant Cleansing Operations Manager

Setting Your Bin Out Correctly For Collection By Our One Armed Vehicle

Watch our video at www.midulstercouncil.org/onearmedvehicle











Make sure the handles of your bin are facing away from the road and towards your property and that your bin isn't tight up against a wall, fence or hedge.

Make sure your bin is within 2.5m or 8ft of the roadside.



If you have 2 bins being collected on the same day, place them slightly apart (approx. 0.3m or 1ft) to give the vehicle's arm enough space to work correctly.

June	July	August
	Tues 5 th  	Tues 2 nd  
	Sat 9 th instead of Tue 12 th 	Tues 9 th 
Tues 21 st  	Tues 19 th  	Tues 16 th  
Tues 28 th 	Tues 26 th 	Tues 23 rd 
		Tues 30 th  

Appendix 3

**This side must
face the road.**

**Please remember
to leave your bin
out by 7.30am
on collection day.**



Comhairle Ceantair
Lár Uladh
Mid Ulster
District Council