

<b>Report on</b>	Northern Ireland Local Authority Collected Municipal Waste Management (LACMW) Report for July to September 2021
<b>Date of Meeting</b>	8 <sup>th</sup> February 2022
<b>Reporting Officer</b>	Mark McAdoo, Assistant Director of Environmental Services
<b>Contact Officer</b>	Mark McAdoo, Assistant Director of Environmental Services

<b>Is this report restricted for confidential business?</b> If 'Yes', confirm below the exempt information category relied upon	Yes	
	No	X

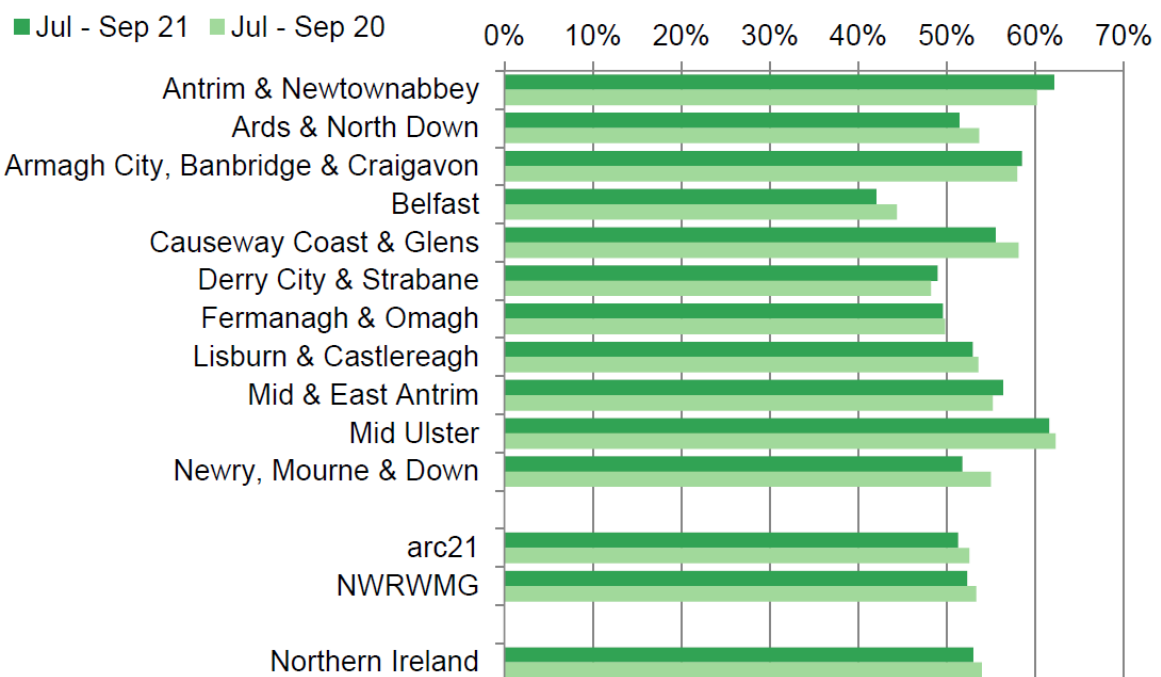
<b>1.0</b>	<b>Purpose of Report</b>
1.1	To update members on the Council's performance in relation to recycling and landfill diversion targets as outlined in the NIEA Northern Ireland Local Authority Waste Management Statistics Report for Quarter 2 of 2021/22 from July to September 2021.
<b>2.0</b>	<b>Background</b>
2.1	<p>The above (provisional) report was published on 27<sup>th</sup> January 2022 by the Department of Agriculture, Environment and Rural Affairs (DAERA). The data in the report is based on quarterly returns made to WasteDataFlow, a web-based system, used by all local authorities throughout the UK to report on local authority collected municipal waste (LACMW). This publication provides information on local authority collected municipal waste from household and non-household sources and recycling and landfill rates in Northern Ireland.</p> <p>Headline figures are shown in the attached infographic with the full report available via the below link:</p> <p><a href="https://www.daera-ni.gov.uk/publications/northern-ireland-local-authority-collected-municipal-waste-management-statistics-july-september-2021">https://www.daera-ni.gov.uk/publications/northern-ireland-local-authority-collected-municipal-waste-management-statistics-july-september-2021</a></p>
<b>3.0</b>	<b>Main Report</b>
3.1	<p>Key Points:</p> <ul style="list-style-type: none"> <li>Northern Ireland's councils collected 275,759 tonnes of waste during July to September 2021, a 4.5 per cent decrease compared to July to September 2020.</li> <li>During July to September 2021, 52.6 per cent of waste collected by councils was sent for recycling, similar to the recycling rate for July to September 2020.</li> <li>The landfill rate for waste collected by councils was 23.7 per cent in July to September 2021, a fall from 71.8 per cent in July to September 2006, but higher than the 21.6 percent recorded during July to September 2020.</li> </ul>

- Just over a fifth (21.5 per cent) of waste arisings were sent for energy recovery in July to September 2021, lower than the 23.0 per cent reported in July to September 2020, but an increase from the 0.1 per cent rate during the same quarter in 2009.
- Household waste accounted for 88.7 per cent of all waste collected during this period.
- The recycling rate for household waste was 53.0 per cent, down from 53.9 per cent in July to September 2020. The landfill rate for household waste was 23.5 per cent, an increase from 21.1 per cent compared to the same quarter last year.

### 3.2 Waste to Recycling:

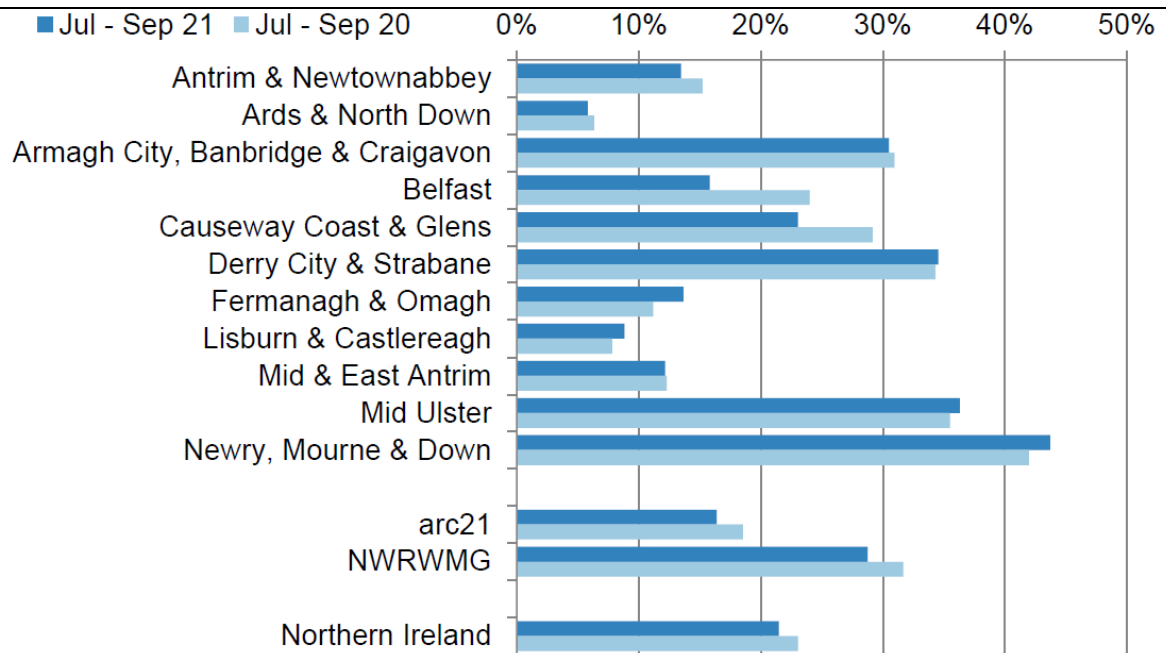
There were 145,049 tonnes of waste sent for preparing for reuse, dry recycling and composting between July and September 2021. The waste recycling rate was 52.6 per cent. This was similar to the 52.9 per cent of waste sent for recycling between July and September 2020.

The rate for recycling rate for Mid Ulster for the quarter was 61.6 per cent which was the second highest rate achieved by any of the eleven Councils (Mid Ulster still has the highest rate over the 12 month rolling period from October 2020 to September 2021).



### 3.3 Waste to Energy Recovery

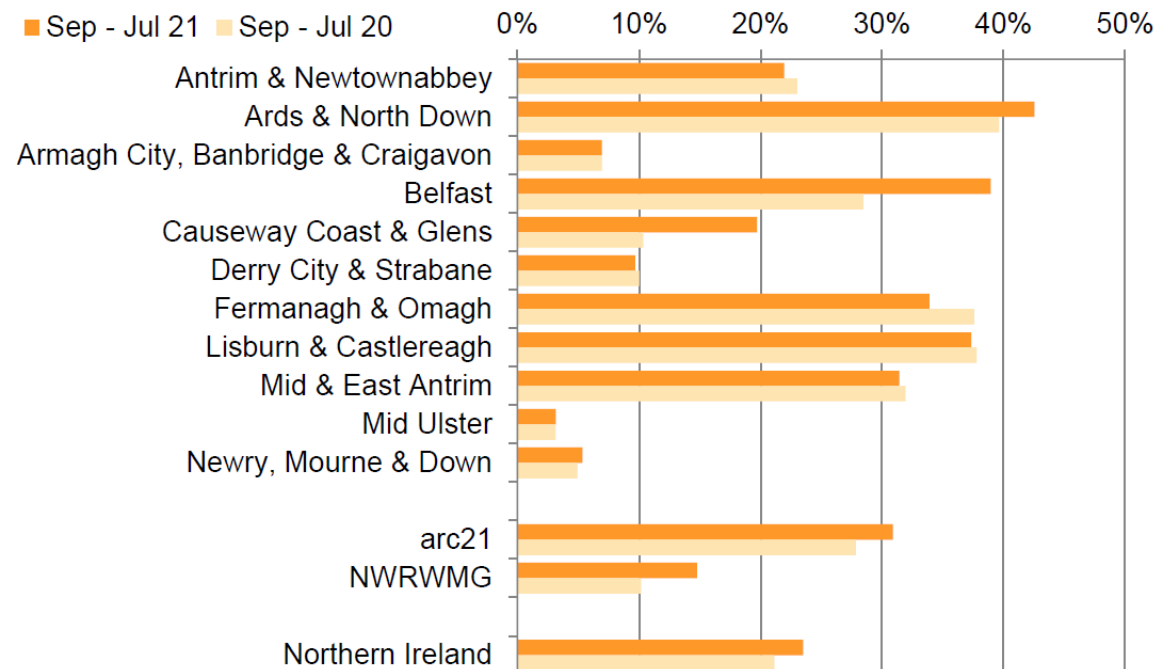
Between July to September 2021, 59,186 tonnes of waste arisings were sent for energy recovery. This produced a waste energy recovery rate of 21.5 per cent, lower than the 23.0 per cent rate reported for the same period in 2020. For each period, the majority of energy recovery was from mixed residual waste, with a smaller proportion from specific streams, e.g. wood. Mid Ulster had the second highest energy recovery rate at 36.3 per cent (as illustrated in below graph):



3.4

Waste to Landfill:

The quantity of municipal waste sent to landfill increased by 4.8 per cent, from 62,430 tonnes during July to September 2020 to 65,423 tonnes between July and September 2021. This gave a quarterly landfill rate of 23.7 per cent, higher than the 21.6 per cent recorded during the same quarter of 2020. The latest quarterly landfill rate for household waste only is 23.5 per cent, an increase of 2.4 percentage points on the same three months of 2020.



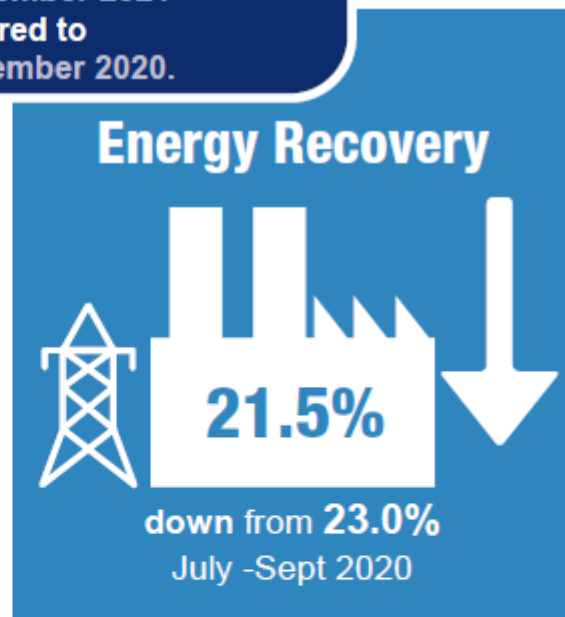
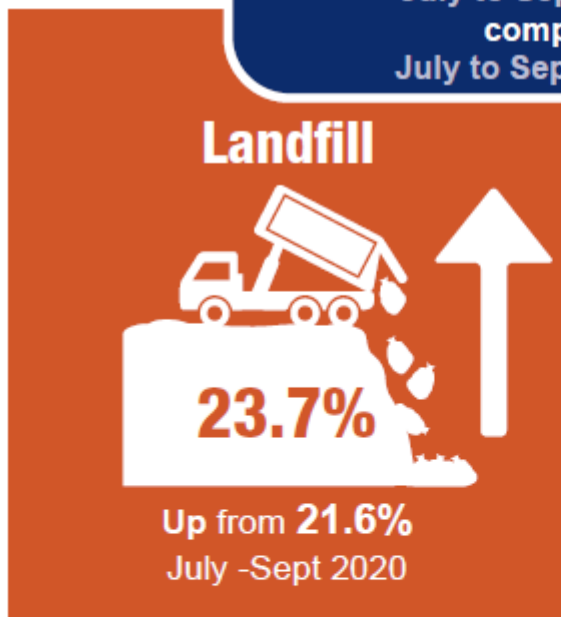
The long term trend has seen the July to September household waste landfill rate fall from 70.3 per cent in 2006 to a low of 21.1 per cent in 2020. The 2.4 percentage point increase in July to September 2021 is the first time the household waste landfill rate has increased for this quarter during this time series. Note that the landfill rate exhibits

	<p>seasonality and the April to June and July to September quarters tend to have lower rates than October to December and January to March. The seasonality stems from the higher level of compostable garden waste arising during spring and summer.</p> <p>Mid Ulster again achieved the lowest landfill rate of all eleven Councils for the quarter, landfilling only 3.2 per cent of household waste.</p>
<b>4.0</b>	<b>Other Considerations</b>
4.1	<b>Financial, Human Resources &amp; Risk Implications</b>
	<p>Financial: Failure to meet waste targets could result in fines.</p>
	<p>Human: A significant amount of time is spent by the Recycling Officers in gathering, collating and submitting the necessary data for quarterly WDF returns.</p>
	<p>Risk Management: Failure to meet waste targets would result in reputational damage.</p>
4.2	<b>Screening &amp; Impact Assessments</b>
	Equality & Good Relations Implications: None
	Rural Needs Implications: None
<b>5.0</b>	<b>Recommendation(s)</b>
5.1	Members are asked to note the contents of this report.
<b>6.0</b>	<b>Documents Attached &amp; References</b>
6.1	Local Authority Collected Municipal Waste Infographic Q2 2021-22.

# Waste Collections by NI Councils July to September 2021



Recycling, energy recovery and landfill rates of LAC municipal waste July to September 2021 compared to July to September 2020.



*Sustainability at the heart of a living, working, active landscape valued by everyone.*