

Changing and Community rooms at Eoghan Ruadh







donaghmore road dungannon



Donaghmore Rd

The Bramley
Apple Bakery



Sign in

Map

Gael scoil Aodha Rua

Google







Community aspect



- Old school grounds had lain derelict for several years.
- Evidence of drug and alcohol usage within the grounds.
- Development plan put in place and plans passed.
- Focus was on Community as well as club. One delivers the other and this area needed both.
- Phase one was the skills wall. Floodlit and open to the public 7 days a week.
- Phase 2. 3 & 4 were field, walkway and car park.
- Walkway opened Nov 2015. Only off-road floodlit walkway in the borough. Open 365 days per year.
- Targeted usage was 60 per week. We estimate usage of 700 per week. 35,000 per year.
- This figure does not include club teams or school. The school alone adds over 700 during term time. Weather permitting

Community aspect



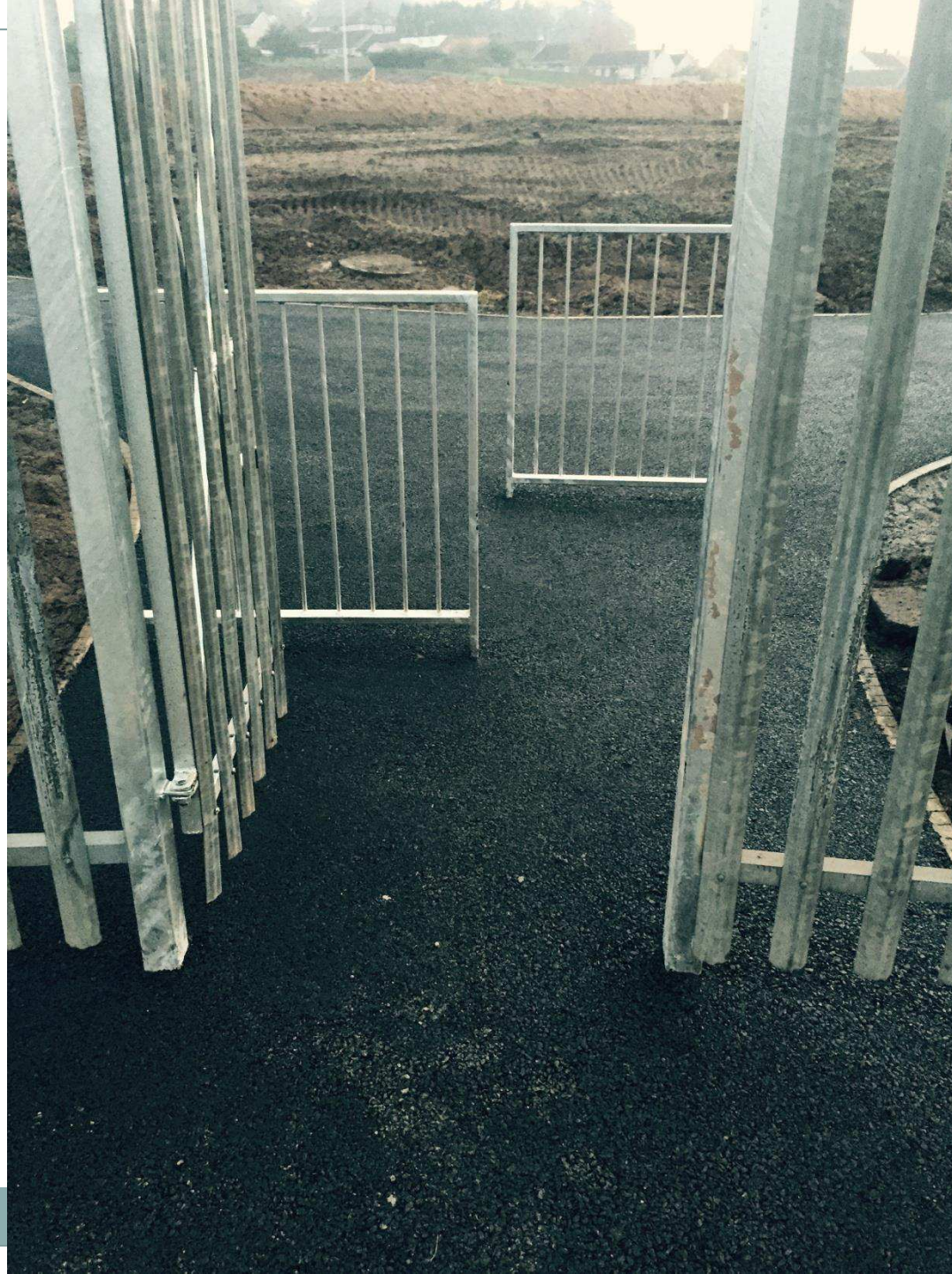
- Walkway interlinked with the Earls walk from the start.
- Road crossing and lower pedestrian gate added to project
- Gates are open and track in use from dawn to 10.30pm 365 days a year
- Floodlights are on photocell and switch off at 10.30pm
- Walkway is fully maintained by the club and volunteers.
- Dogs on a lead were welcomed and that continues to be the case.
- Local nursing homes and schools use the walkway free of charge.
- Community defibrillator available at £600 cost to club.
- Adaption of walkway and flower beds etc cost club approx £25,000
- Public toilets added to changing rooms at extra cost to the club.
- Walkway lights cost approx £1200 per year, excluding maintenance.
- Car park will need finished at approx £30,000 to the club











Done

Eoghan.Ruadh(20-06-18)-Model.pdf



FRONT ELEVATION





FRONT ELEVATION

