



# EMMETS

*Together*

WORKING FOR  
OUR FUTURE

**Presentation to Mid Ulster Council Development Committee**

**16<sup>th</sup> October 2023**

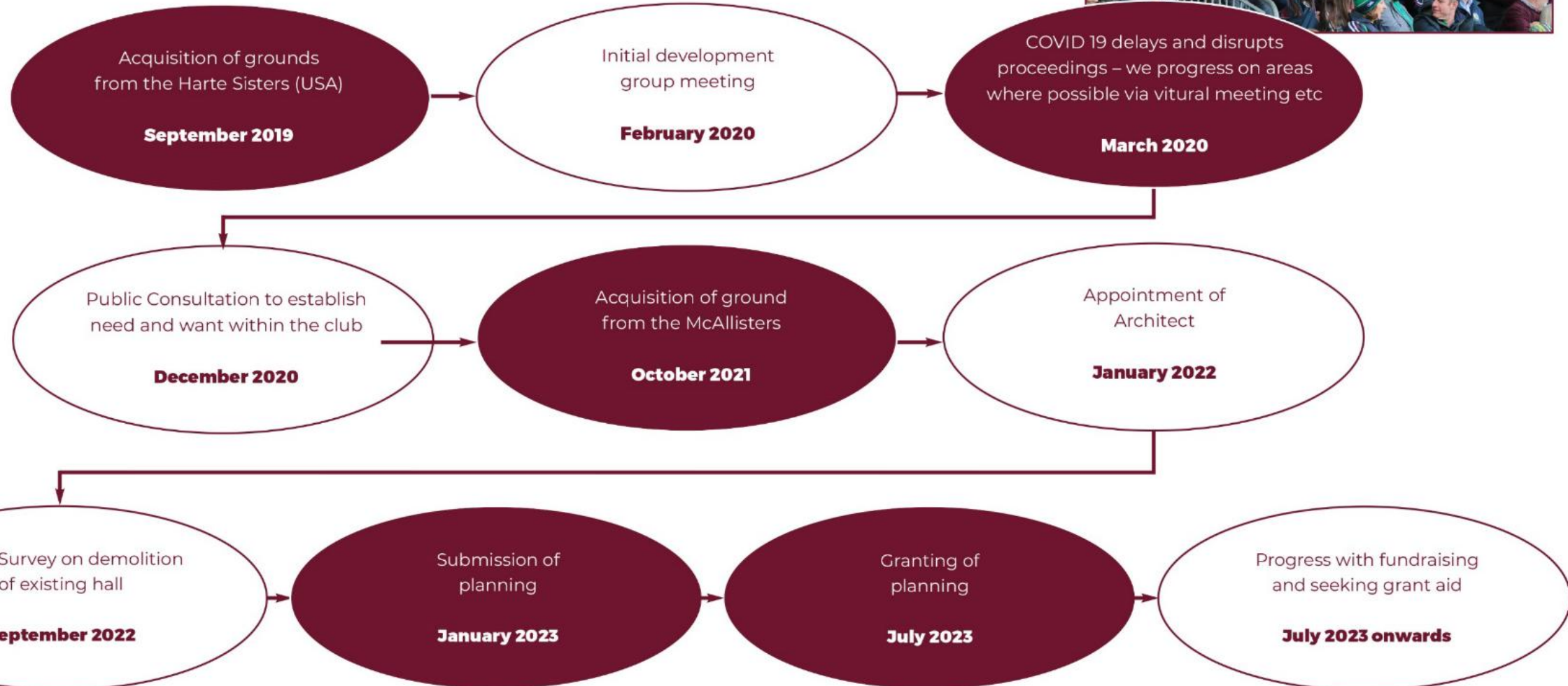
Johnny McKaigue & Ursula O'Loughlin

## **Background on Robert Emmet's GAC Slaughtneil**

- Established in 1953
- Excellence in Gaelic Games across 3 codes - 31 Teams across Football, Hurling & Camogie
- County, Ulster & All Ireland Champions between 2014-2021
- Running & Cycling Clubs, Rounders Team, Health & Well Being Committee with support programmes
- Circa 480 registered Adult members increasing to 843 affiliates including volunteers, non-playing members and under 10's
- Social Value Contribution equating to £562,032pa
- Strong linkages with An Carn with the local area winning the prestigious All-Ireland Glór na nGael competition for Irish language reinstatement in 2010, 2014 and in 2020.
- Limited Capital Investment since 1984 when current hall was constructed
- Outgrown our facilities with existing infrastructure unable to sustain continued growth

# Where are we at? and how have we got there?

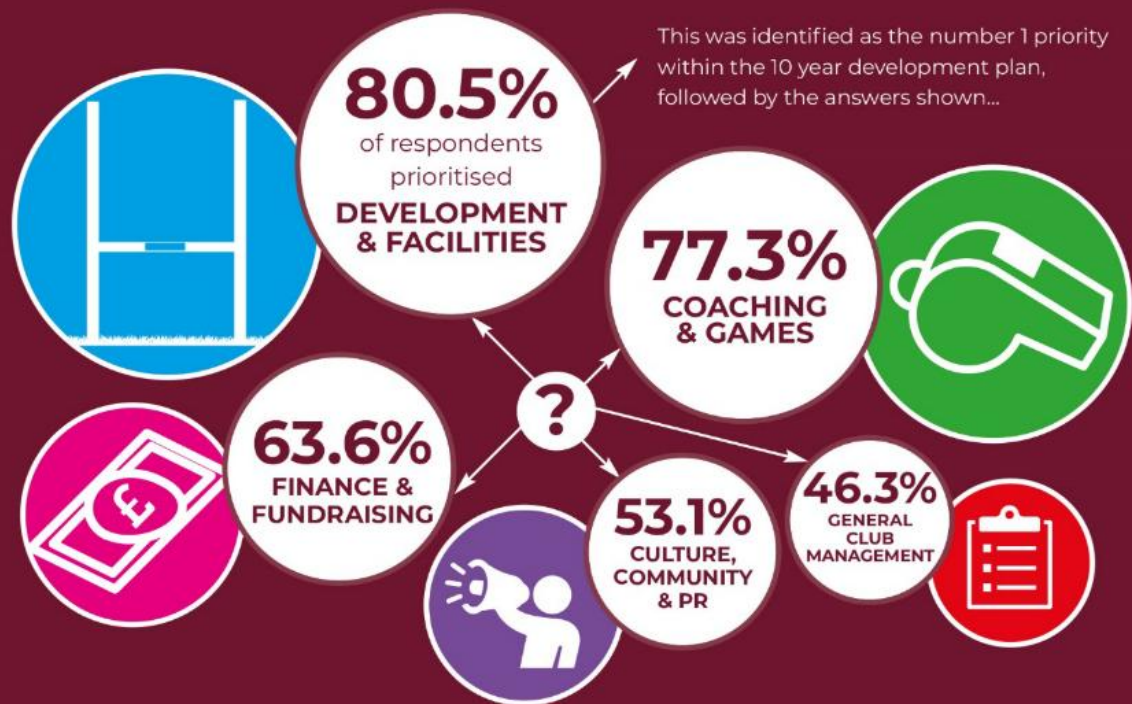
Below highlights the timelines and major steps on the way to bring us to where we are today. As I am sure you appreciate, each step forward to date has taken a lot of due consideration, man hours and meetings to achieve the targets set.



# Survey Findings

We have gone to great lengths to engage with the community during difficult circumstances. Our consultation process is in line with current GAA guidelines and we had assistance from a mentor assigned by the GAA. The Club & Community Engagement survey was sent to 423 members with 277 responses received representing a 65% response rate, which was a tremendous outcome.

## What You Told Us



## Priorities for Development & Facilities were confirmed as follows:



### Additional Commentary from respondents included the importance of:

- Inclusive activity for children with different abilities and needs
- Coaching and developing players
- Activities for non-playing members, the elderly and isolated members of the community

## Project Description:

The proposed development project aims to address the limitations of the current facilities by adding the following components:

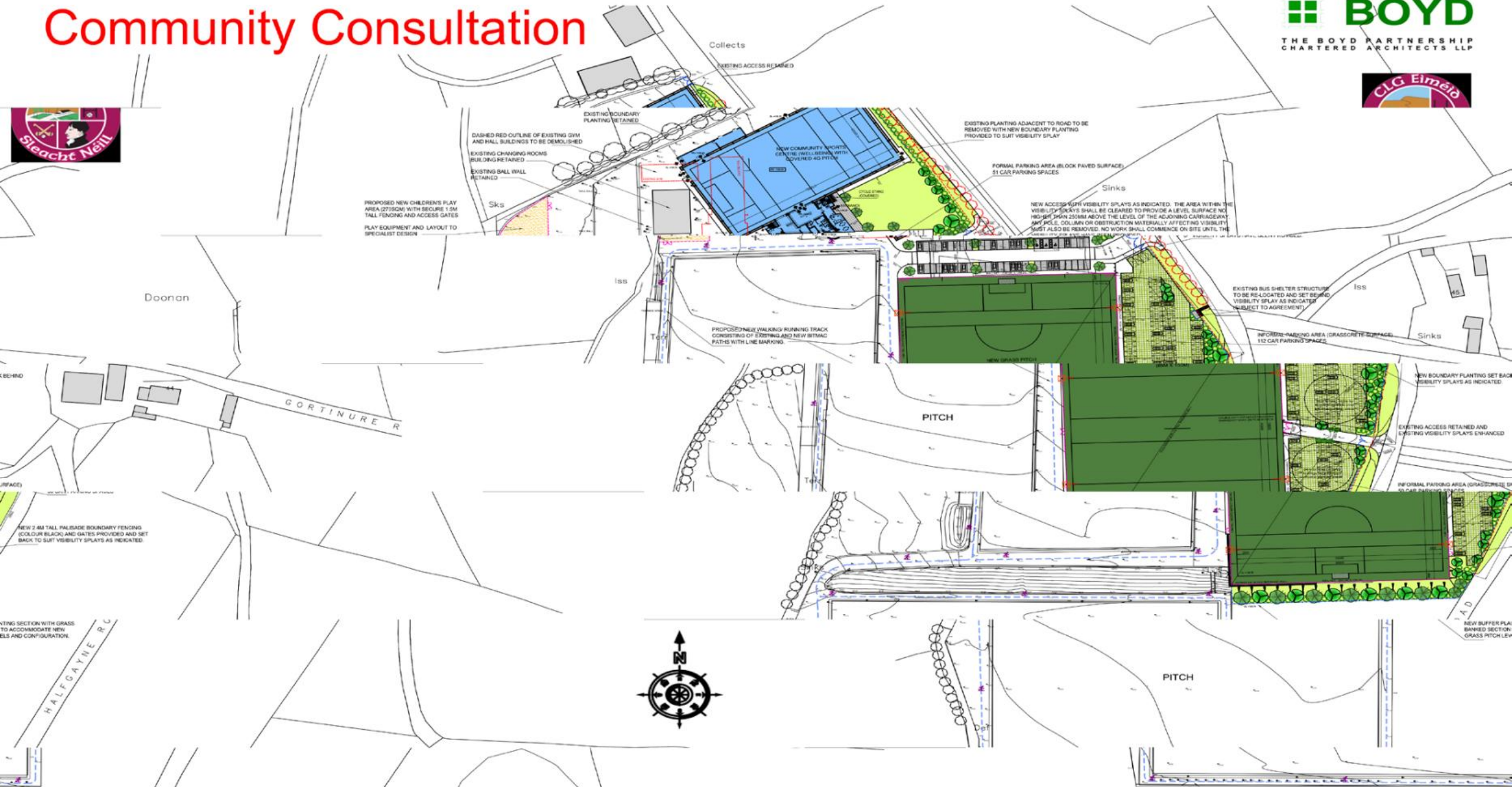
- a.** 4G Indoor Hall: Constructing a state-of-the-art 4G indoor hall that provides a versatile space for training, matches, and community events throughout the year. The facility will include modern amenities such as seating areas, a gym, changing rooms, and equipment storage.
- b.** Additional Training Pitch: Building an extra training pitch to meet the demand for practice space, enabling multiple teams to train simultaneously. This will enhance the training experience for members and reduce scheduling conflicts.
- c.** Perimeter Walkway: Creating a well-maintained walkway surrounding the premises, offering a safe and enjoyable space for community members to engage in recreational activities like walking, jogging, and cycling.
- d.** Children's Playground: Developing a children's playground to cater for families and promote an active lifestyle among the younger generation. It will feature age-appropriate equipment and provide a secure environment for children to play and socialise.



The sequence of these elements will be based on funding available. We accept that this is a very ambitious plan and will be fully reliant on funding. The priority of phases may change if funding pots become available for a particular element.

All elements have been derived from the initial club survey held in December 2020.

# Community Consultation



# Community Consultation



Community Wellbeing Centre

visual 1... CLG Sleacht Néill Comr

# Community Consultation



CLG Sleacht Néill Community Wellbeing Centre

visual 2...



# Estimated Costing

The estimated cost for the project at this stage is £4,350,000.00. This covers construction, contingencies, and professional fees of all planned elements of works. These costings are based on the current planning drawings and costs could change based on design development when moving the design from planning drawings to construction status drawings. The below table demonstrates the estimated costs of each element of works:

Element 1	
Development of 4G Indoor training area	£2,460,000.00
Car Parking and associated site works	£480,000.00
Professional Fees	£150,000.00
Contingency	£200,000.00
	£3,290,000.00

Element 2	
Development of Full-Size GAA Pitch c/w lighting	£700,000.00
Car Parking and associated site works	£110,000.00
Professional Fees	£60,000.00
Contingency	£50,000.00
	£920,000.00

Element 3	
Walkway and children's play park	£120,000.00
Contingency	£20,000.00
	£140,000.00

Total Project Cost	
Total Project Cost	£4,350,000.00
Capital Costs	£3,870,000.00
Professional Fees	£210,000.00
Contingency	£270,000.00



## Proposed Funding Package & Progress to Date

FUNDER	AMOUNT	STATUS
Emmets Slaughtneil	£800,000	£500,000 confirmed
Serviced Loan	£800,000	Loan repayments secured
Shared Island Funding	£750,000	Meetings ongoing
UK Shared Prosperity Fund	£100,000	Awaiting measure to open
NI Government Departments	£1,000,000	NI Ex Restoration Required
Ulster GAA	£100,000	Discussions ongoing
Mid Ulster Council	£350,000	£50,000 applied for
Sport NI	£450,000	£30,000 applied for awaiting other programmes to open
<b>TOTAL</b>	<b>£4,350,000</b>	

## Affordability

- Business Plan & 5 yr projections prepared
- Increased Operating Costs from Yr 2028 increasing from £175,000 currently to circa £266,000
- Initial strategy has been developed to secure the additional circa £90,000 per annum required to operate the new facilities:

INCOME SOURCE	INCREASED AMOUNT
Increase Existing Cairde Emmets contribution from £10 per mth to £20	£37,000
Secure 100 additional Cairde Emmet Members	£24,000
Income from 4G downtime	£20,000
Income from Gym Membership	£16,000
<b>TOTAL</b>	<b>£97,000</b>

**Thank you for your time**

**Questions/Answers**