

COLLEGE DEVELOPMENT PLAN
2018-21



www.swc.ac.uk





OUR STRATEGIC PRIORITIES

1. DEVELOPING A REGION WITH NO SKILLS GAPS

- Progressive and future-proofed professional and technical education and training
- Higher Education
- SME R&D and innovation support
- SMART Region

2. TACKLING ECONOMIC ACTIVITY

- Addressing economic activity and reaching out to those with low qualifications
- Rural proofing our services

3. EDUCATIONAL PATHWAYS TO PROGRESSION & SUCCESS

- Excellence in teaching and learning which is student focussed
- Student digital learning and our on-line presence
- Education and skills Innovation Clusters

4. STAFF & STUDENT WELLBEING AND DEVELOPMENT

- Listening to and responding to the Student Voice
- An excellent student experience
- Looking after developing our staff
- Citizenship, social responsibility and environmental sustainability

5. A GLOBAL PRESENCE

- International best practice and widening the horizons of our students and staff
- Innovation through dynamic partnerships and collaborations

6. WORLD CLASS: EXCELLENCE, QUALITY & BRAND

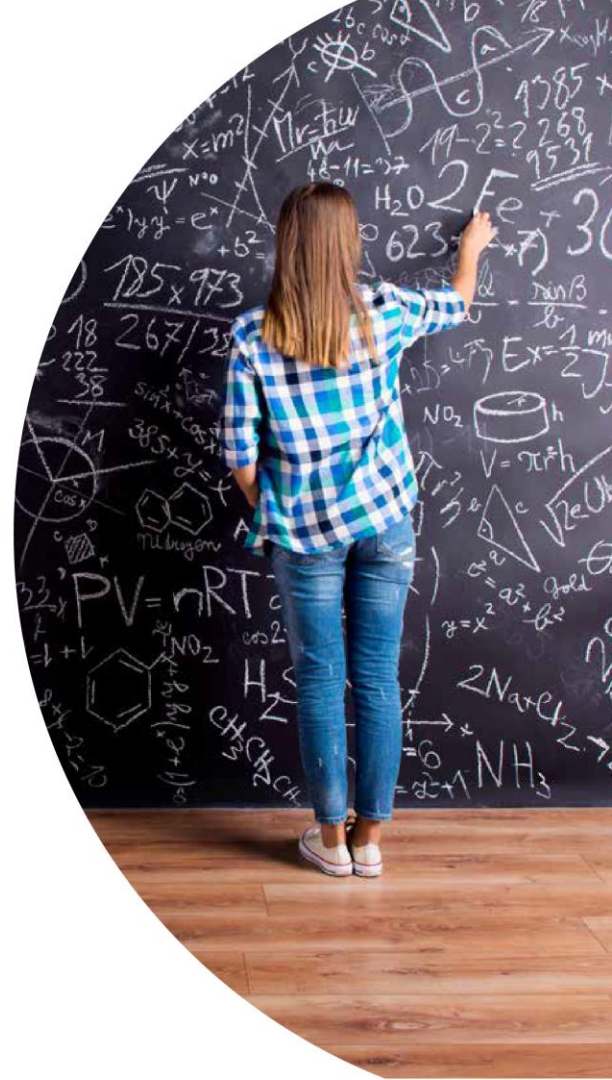
- Continuous improvements and efficiencies
- A world class estate
- A destination of choice

STUDENT INTEREST AND ACCESS

STRATEGIC OBJECTIVE 1

INCREASE THE NUMBER OF STUDENTS EASILY ACCESSING EDUCATION AND TRAINING, INCLUDING THOSE WHO ARE HARDER TO REACH

1. Improve the understanding and perceived value of educational opportunities offered by SWC
2. Increase student interest and success in industries experiencing skills gaps
3. Identify and reduce access barriers for all prospective students, particularly among underserved populations



PATHWAYS FOR STUDENT SUCCESS

STRATEGIC OBJECTIVE 2

PROVIDE A CONTINUUM OF EDUCATION AND TRAINING TO STUDENTS THROUGH A DYNAMIC FUTURE-PROOFED CURRICULUM OFFER WHICH IS ALIGNED TO THE NEEDS OF INDUSTRY

1. Enhance Curriculum & Skills Training Delivery

- Align curriculum pathways through the implementation of a Curriculum School Model
- Realise Centres for Excellence in Higher Education, Further Education, Work Based Learning, Digital Learning and Social Inclusion
- Future proof College through development of innovative new curriculum in STEAM and priority skills areas and new pedagogy for digital learning
- Delivery of curriculum support innovations e.g. through digital technologies, enterprise and project based learning, mentoring models to enhance the quality of the student learning;
- Extend and further embed workforce planning and upskilling strategies.
- Deliver excellent teaching and learning which is student centred

2. Realise an excellent student experience through impactful student support services



ECONOMIC IMPACT THROUGH PARTNERSHIP

STRATEGIC OBJECTIVE 3

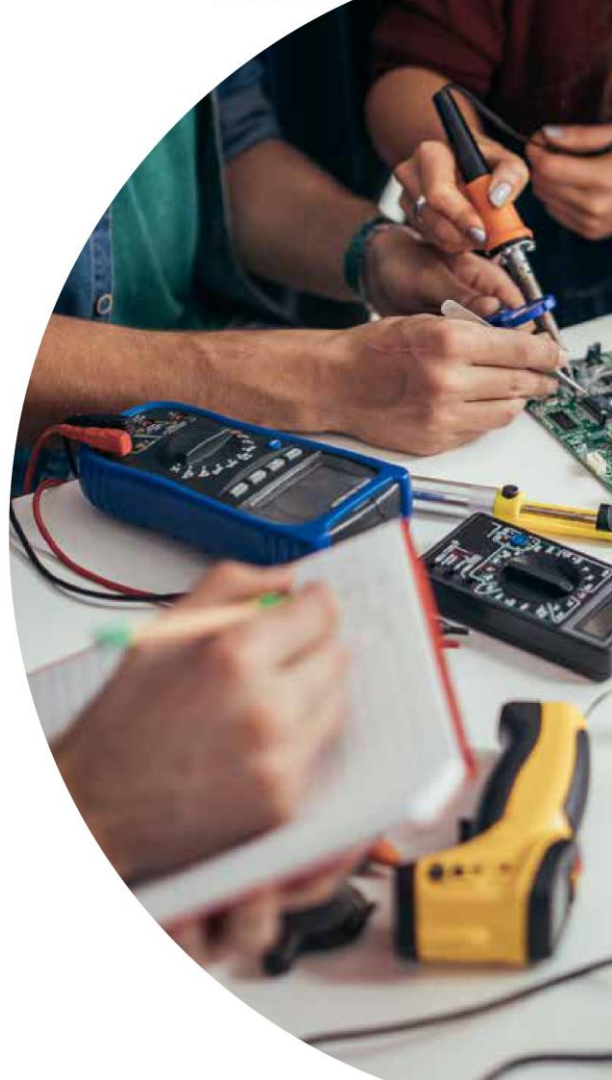
DEVELOPING PARTNERSHIPS TO ENSURE THAT THE COLLEGE DELIVERS ECONOMIC AND SOCIAL IMPACT

1. Collaborate with stakeholders to promote seamless education clusters, connecting College, schools and universities, economic development partners, and industry

- Promote and develop new collaborative model for apprenticeships and traineeships.
- Realise Engineering & Advanced Manufacturing Hub and Mid Ulster Engineering Centre.
- Growth in SME & R&D and innovation support and delivery of industry applied research up to PhD level.
- Development of collaborative partnerships to build a SMART region.
- Realise Enniskillen Workhouse project to promote entrepreneurship.
- Deliver impactful social inclusion provision through collaborative working with community and voluntary sector partners and stakeholders.

2. Extend SWC global identity and build stable strong partnerships which will provide new and innovative opportunities

- Extend College international profile through increased transnational education and language experiences for staff and students.
- Develop existing and new strategic partnerships through leveraging new external funding.



SYSTEM

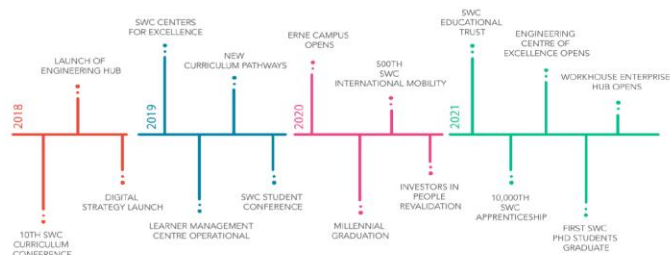
STRATEGIC OBJECTIVE 4

DELIVERING EXCELLENT ORGANISATIONAL EFFECTIVENESS, SYSTEMS, INFRASTRUCTURE AND DECISION MAKING TO SUPPORT A COHESIVE AND INNOVATIVE COLLEGE

1. Ensure access to robust systems and technology to meet student and institutional needs
2. Robust financial governance maintaining strong track record of financial efficiency
3. Provide world-class educational facilities and support which will inspire learning and development



SWC INNOVATIONS



Centres of Excellence

- Leading and driving excellence in Higher Education, Further Education, Work-based Learning, Digital Learning, and Social Inclusion

Wellbeing Community Hub

- Physical space, suite, counselling rooms
- Outside agencies can locate

SWC Educational Trust

- Vehicle to drive the social bond
- Private sector and alumni investors
- Corporate Social Responsibility project (The Education Foundation for South Sudan)

Engineering Centre of Excellence

- Sustain PhD research
- Guest lectures in residence (inward and outward)

Workhouse Enterprise Hub

- Develop staff and student's entrepreneurial activity
- Staff engagement in knowledge transfer projects

Education Innovation Cluster

- Collaborative model for education and skills development in the South West region.

150

150 businesses supported with R&D projects per year

225

SWC has now delivered 225 innovation vouchers with local businesses

7

7 companies engaged with KTP projects

25

25 FUSION projects delivered

1000

1000 students engaged with Enterprise activities

4

4 SWC PhD students undertaking research for industry

Business Engagement by Category

- Motor-vehicle
- Transportation and Storage
- Professional and technical
- Other Service Activities
- Manufacturing
- ICT
- Health and Social Work
- Utility Services
- Construction
- Arts and Entertainment
- Agriculture
- Accommodation and Food

InnovateUs
and Skills
Focus 17/18



Age Distribution

- Over 50 - 7%
- 40-49 Years - 6%
- 30-39 Years - 8%
- 20-29 Years - 16%
- Less than 20 - 63%



Enrolment by Campus

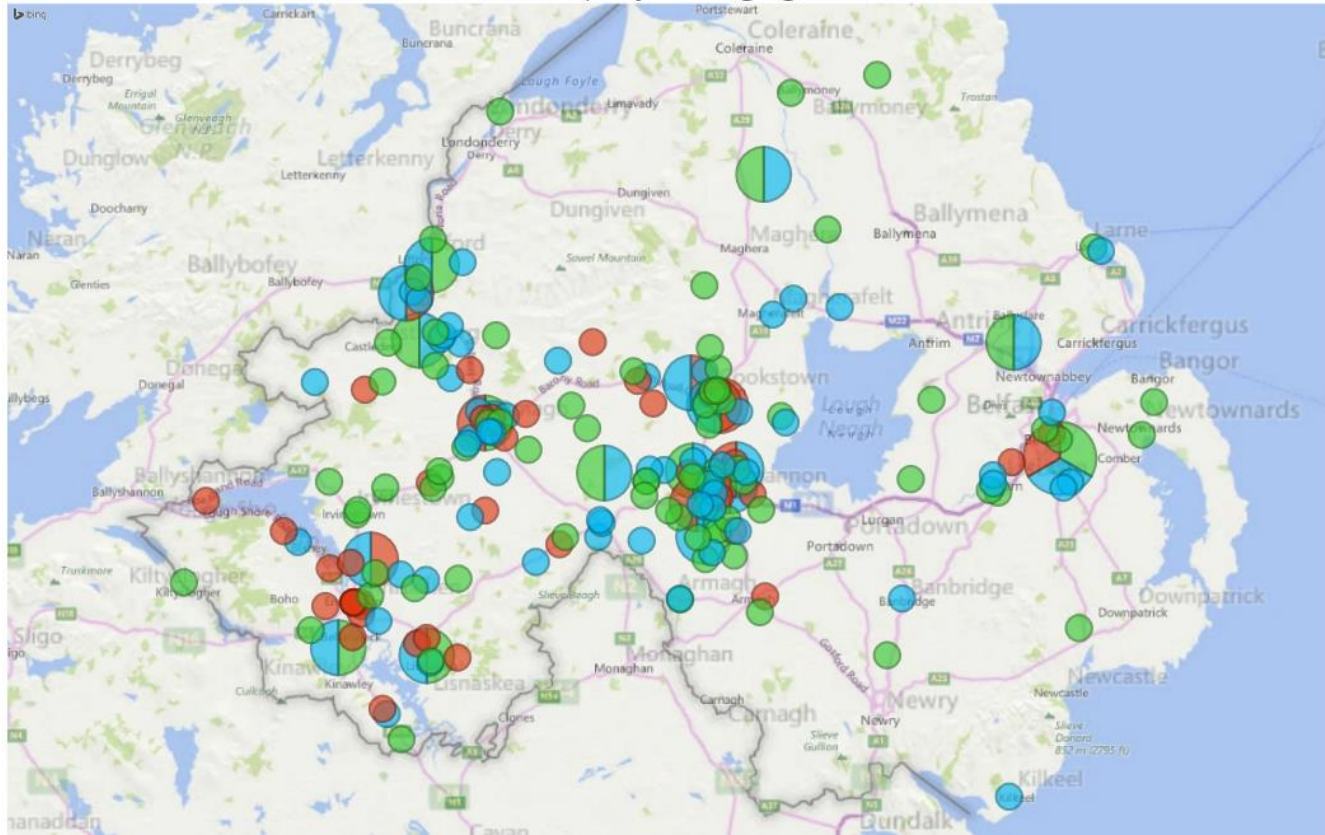
Omagh	6,528
Enniskillen Technology and Skills centre	2,090
Enniskillen Fairview	3,453
Dungannon	6,230
Cookstown	546
Community Education	2,113

A close-up photograph of two people in business attire shaking hands. The person on the left is wearing a dark suit and a blue tie. The person on the right is wearing a light-colored, textured sweater. The background is blurred, showing a window with greenery outside.

ECONOMIC DEVELOPMENT IN MID ULSTER



SWC DELIVERY



SKILLS FOCUS – SWC MODEL

SWC AIMS TO HAVE PROVISION COVERING FOUR KEY AREAS FOR COMPANIES;



WORKSHOP



PRODUCTION



SALES



MANAGEMENT



SKILLS FOCUS



SKILLS FOCUS – SWC MODEL

WORKSHOP

- Solid Works 3D CAD
- Welding
- Hydraulics
- Electronics
- Passive House Trades

SALES

- Customer Service
- ILM L2 Team Leading

PRODUCTION

- Business Improvement Techniques
- ILM L2 Team Leading
- Passive House Designer
- BIM
- ILM L3 Leadership & Management

MANAGEMENT

- ILM L5 Leadership & Management



Mid Ulster Engineering Innovation Programme

Supporting Local Business



- ✓ RECRUITMENT OF 18 BUSINESSES
- ✓ INNOVATION AUDITS
- ✓ INNOVATION SUPPORT
- ✓ ENGINEERING EVENT

Euro Springs Ltd



McIVORaviation



the
bmi
group

surfaceform



Mid Ulster Engineering - **Facing the Future**

PRE-EVENT BUSINESS TOUR 18TH JUNE

EVENT – BURNAVON 19TH JUNE. 116 ATTENDEES





CONSTRUCTION

SouthWest
College
...

CURRENT CONSTRUCTION PROVISION



BSc Hons
Construction Engineering
and Management
(only college in Northern Ireland)

Foundation Degree
in Construction
Engineering

HLA

Foundation Degree
in Civil &
Environmental
Engineering

HLA

Foundation Degree
in Architectural
Technology with
Sustainable Design

Foundation Degree in
Building Services &
Renewable Energy

HLA

BTEC Extended
Diploma in
Construction and the
Built Environment

BTEC Diploma in
Construction and the
Built Environment
(Civil Engineering)

BTEC Subsidiary
Diploma in
Construction and the
Built Environment

Work+ Civil
Engineering
Apprenticeship

L3 Apprenticeship

BTEC First Certificate in
Construction & the Built
Environment

L6

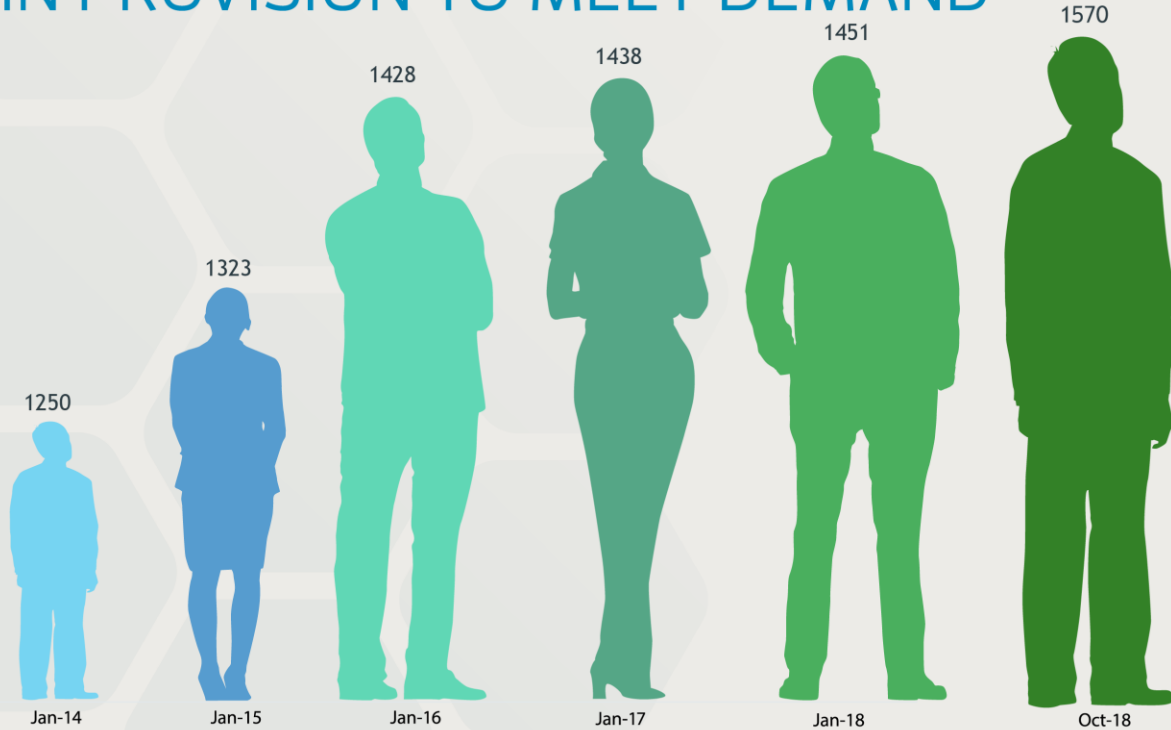
L5

L3

L2

TRAINING FOR SUCCESS/APPRENTICESHIP

GROWTH IN PROVISION TO MEET DEMAND



PARTICIPATIONS IN PLACEMENT

Strategic Focus on Promoting Apprenticeships and
Participation in Work Placement for Training for Success
participants



QUALITY ASSURANCE

Professional Accreditation for Foundation Degrees

Work in Progress

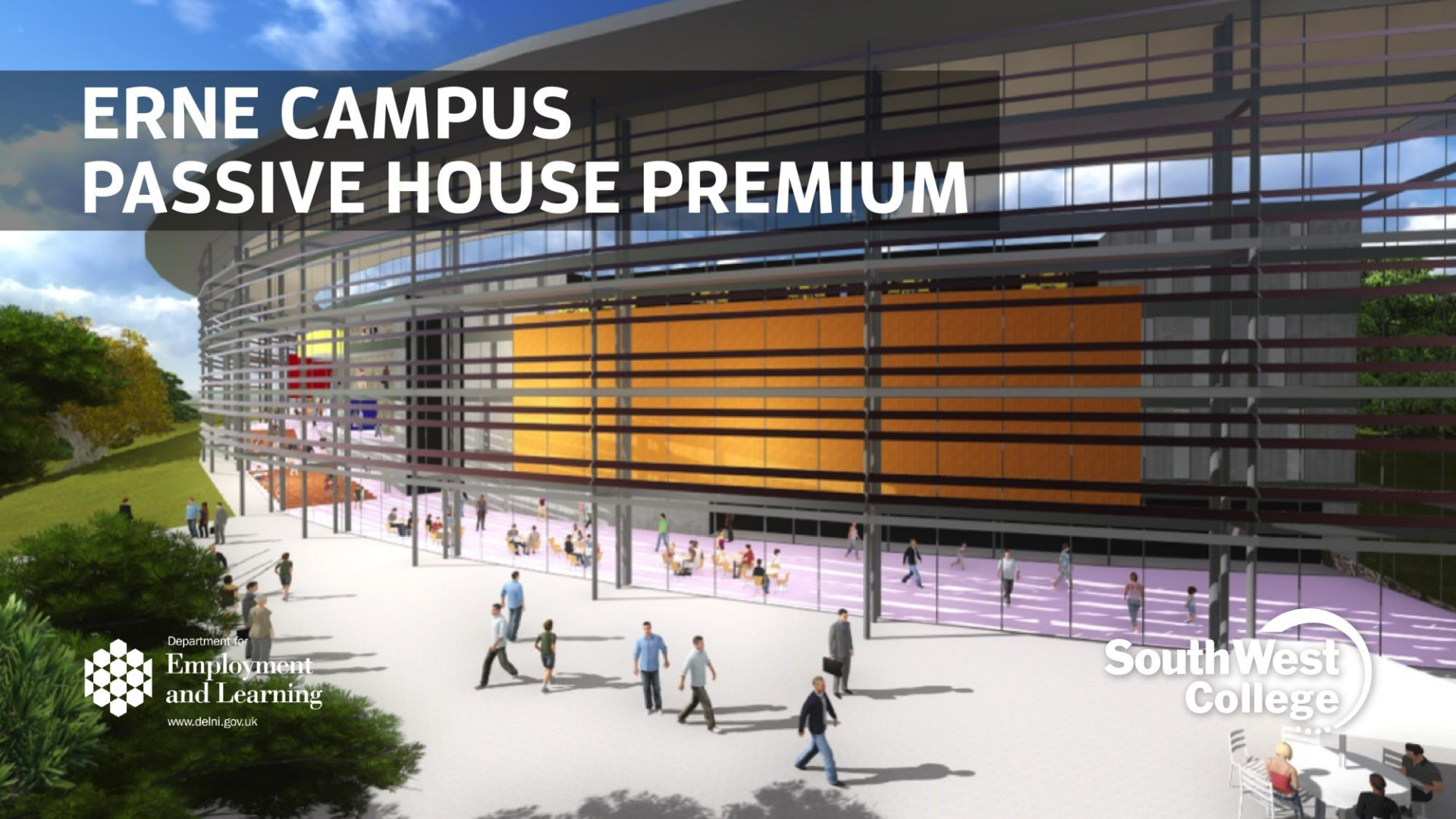


ERNE CAMPUS PASSIVE HOUSE PREMIUM



Department for
Employment
and Learning
www.delni.gov.uk

South West
College



CURRICULUM DEVELOPMENT

SPECIALIST EQUIPMENT

GPS – R10 HARDWARE & ROBOTIC TOTAL STATION

UAV DRONE – SPATIAL DATA CAPTURE

3D GEOSPATIAL SPATIAL SCANNER

PIX4D SOFTWARE – POINT CLOUD TECHNOLOGY

SPECIALIST ENGINEERING 3D PRINTING

HYDRAULIC FLUME

CONE PENETROMETER (SOILS TESTING)

CONCRETE TESTING EQUIPMENT



GAME BASED LEARNING



ASSESSMENT

Performance in games can be measured and recorded for grading



ENGAGEMENT

Hands on learning activities



NEW TECHNOLOGIES

UAV (Drone) Technology training

RESEARCH PRESENTED AT INTERNATIONAL CONFERENCES

2017

SOUTH PACIFIC PASSIVE HOUSE CONFERENCE, CHRISTCHURCH, NEW ZEALAND
21ST INTERNATIONAL PASSIVE HOUSE CONFERENCE, VIENNA, AUSTRIA
NORTH AMERICAN PASSIVE HOUSE NETWORK CONFERENCE, CALIFORNIA, USA

2016

1ST INTERNATIONAL SYMPOSIUM ON SMALL-SCALE INTELLIGENT MANUFACTURING SYSTEMS, NORWAY
CREATIVE CONSTRUCTION CONFERENCE, BUDAPEST, HUNGARY - GEOSPATIAL SCANNING BIM

2015

5TH INTERNATIONAL WORKSHOP OF ADVANCED MANUFACTURING AND AUTOMATION, SHANGHAI, CHINA

2014

22ND EUROPEAN BIOMASS CONFERENCE AND EXHIBITION, HAMBURG GERMANY
TA3, TRANSATLANTIC TRAINING AND TECHNOLOGY ALLIANCE, INDIANAPOLIS, USA

CANADA



CHINA



RUSSIA

