

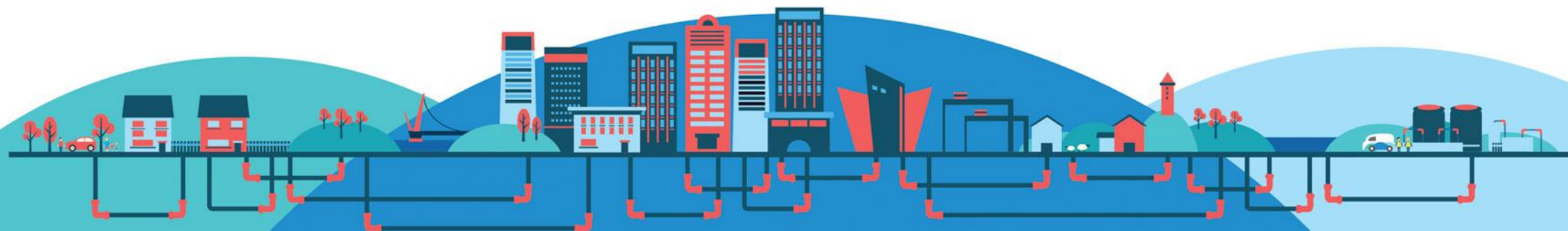
Risk to Vital Infrastructure for Mid Ulster District Council

16 December 2019

Dr Stephen Blockwell, Head of Investment Management, NI Water

Grahame Millar, Head of Wastewater Infrastructure Delivery, NI Water

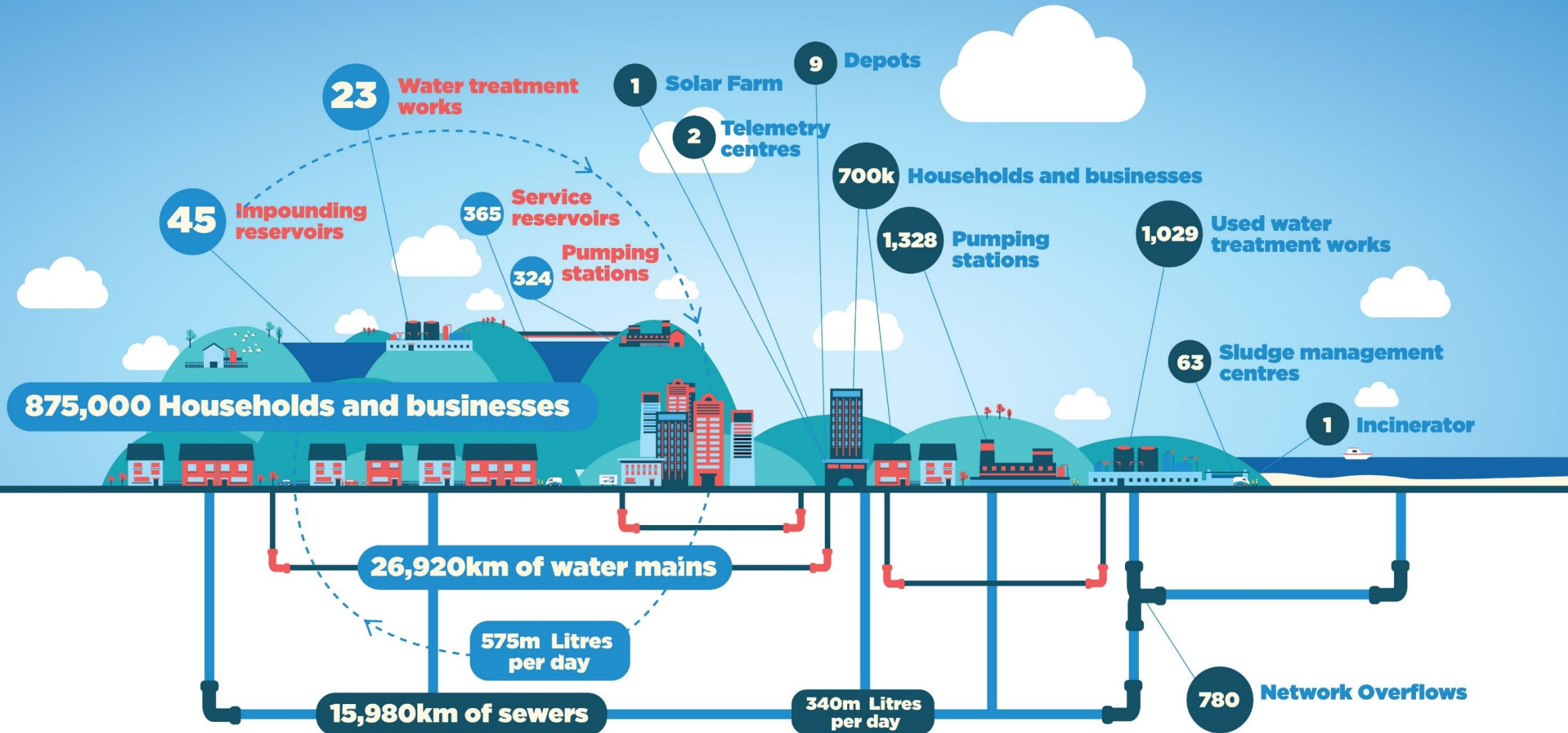
ELECTED REPRESENTATIVE HOTLINE: 0345 300 6461



Our Presentation Will Cover:

- NI Water and Northern Ireland's ambitions
- Strategic issues for water and wastewater infrastructure across Northern Ireland and Mid Ulster District Council
- The critical nature of funding and your support

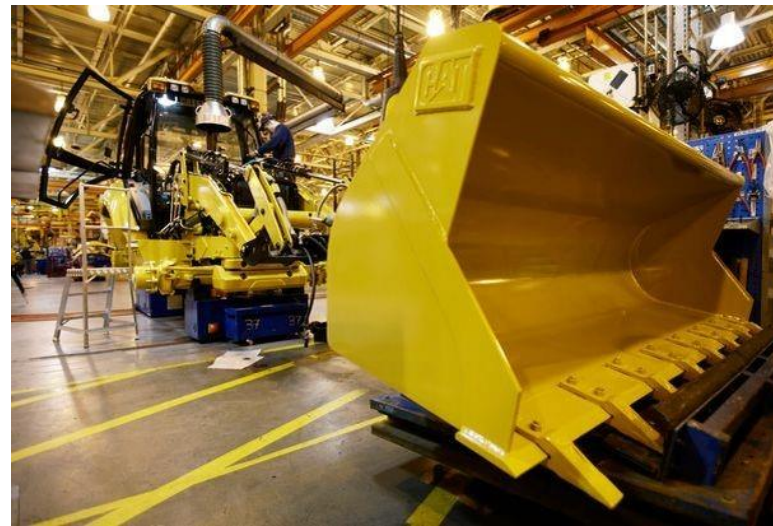
NI Water: Vital Infrastructure Scope



Population Growth



Business and Industry



Tourism Growth



Northern Ireland's Ambitions

DRAFT PROGRAMME FOR GOVERNMENT FRAMEWORK 2016 – 21

Programme for Government Outcomes Framework

Our Purpose

Improving wellbeing for all – by tackling disadvantage, and driving economic growth

Outcomes



Respond to the consultation: www.northernireland.gov.uk



THE NORTHERN IRELAND ECONOMY: 2017–2030 MILESTONES

By 2021, we will have



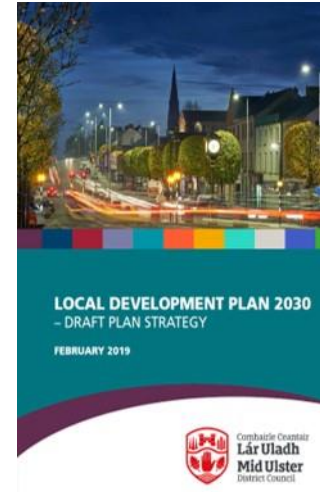
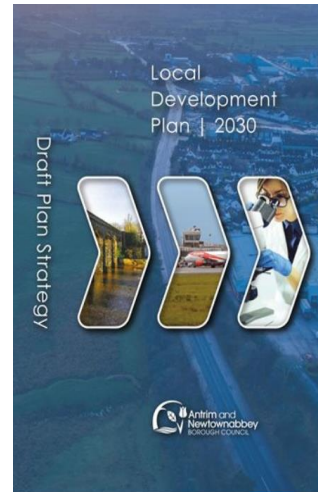
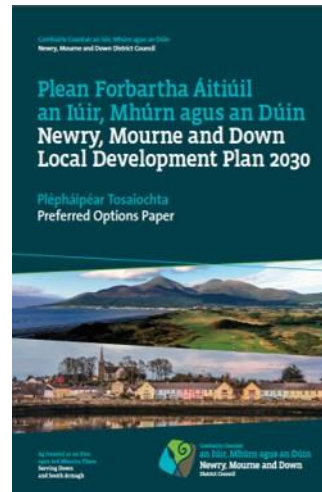
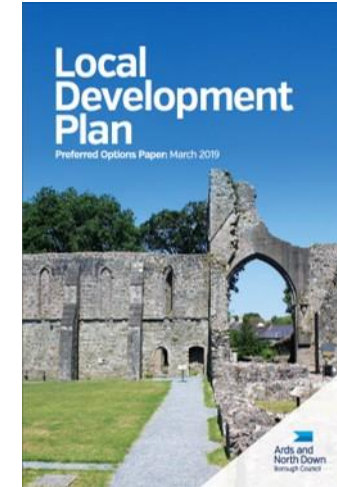
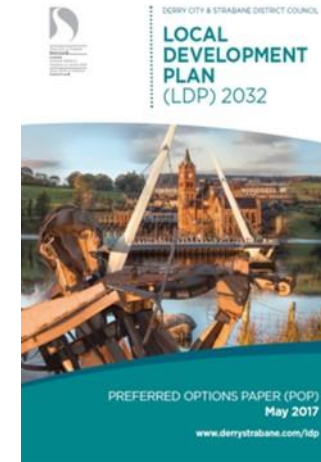
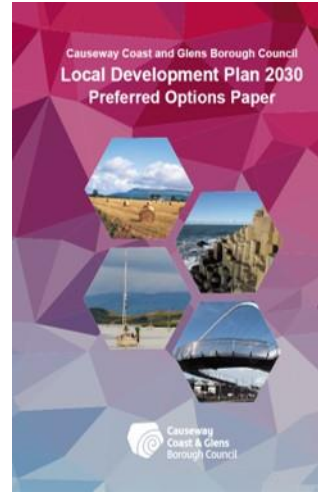
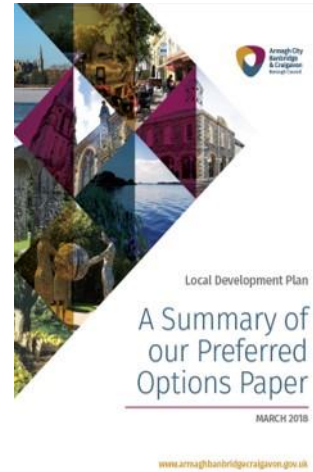
By 2025, we will have



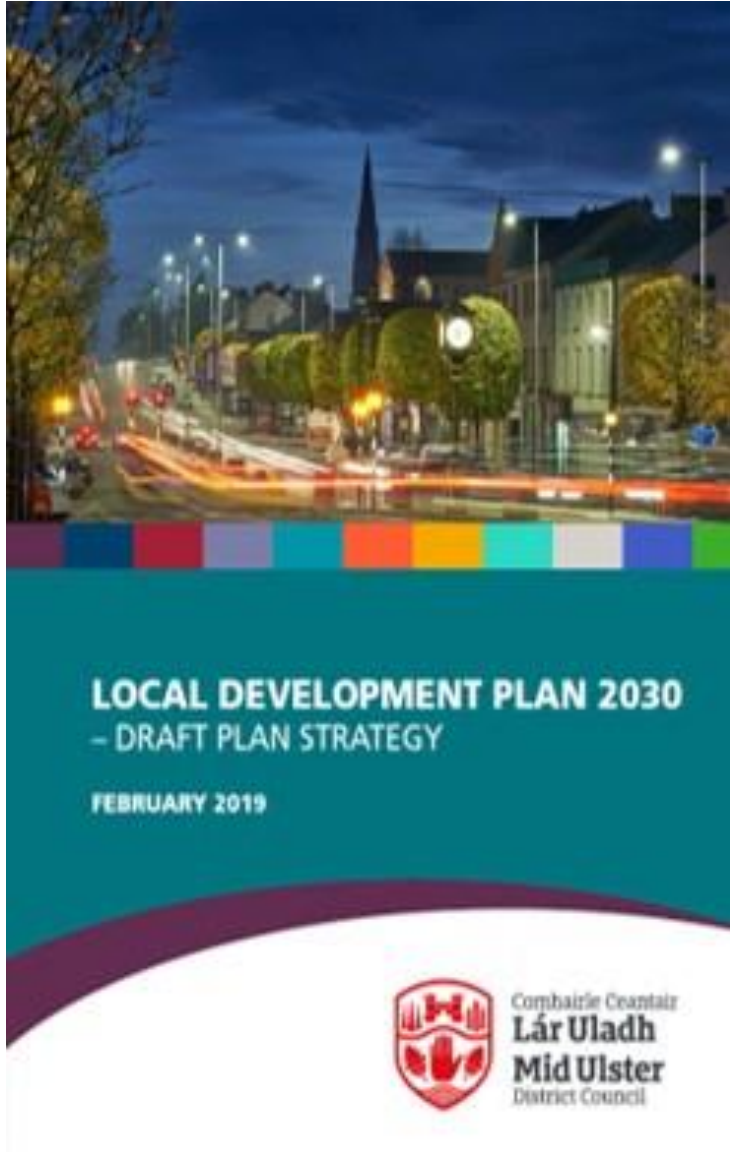
By 2030, we will have



Council Ambitions



Mid Ulster District Council Ambitions



By 2030

- 11,000 new homes
- 8,500 new jobs

Main Towns – Cookstown, Dungannon, Magherafelt

Local Towns – Maghera, Coalisland

Vision for Mid Ulster is to make it a desirable place in which to live, work, invest and visit.

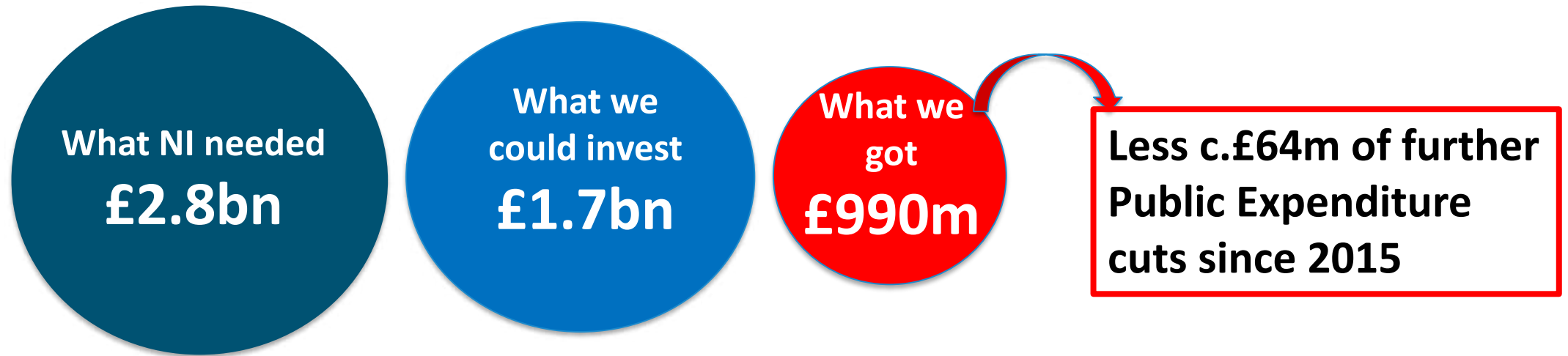
NI Water's Funding



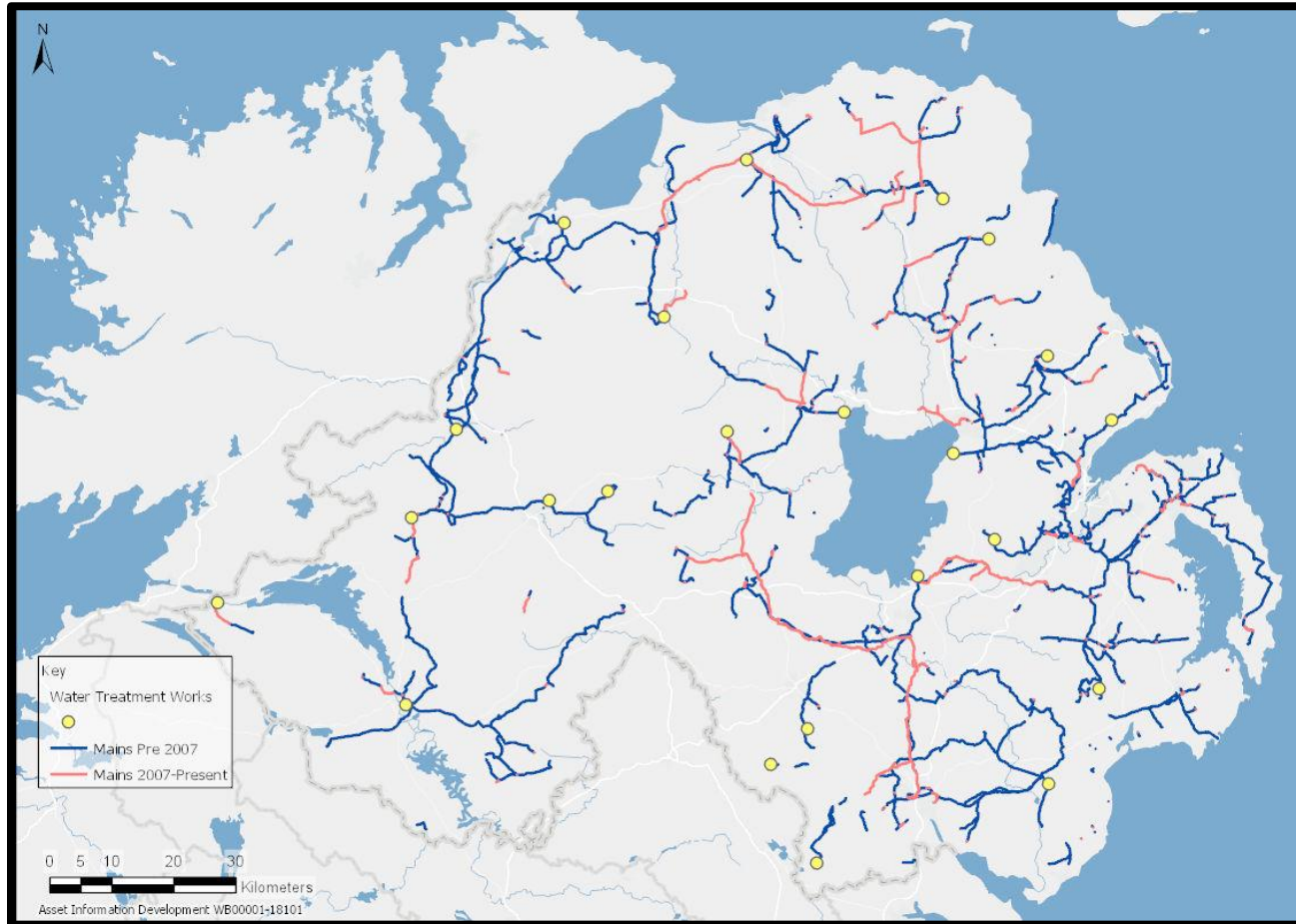
NI Water can only spend within its Annual Public Expenditure budget

NI Water's Funding Challenge (in 2013)

PC15 Capital Business Plan (2015 to 2021)



Safe, Clean Water Supplies



**Protecting safe, clean,
drinking water supplied
to houses and business is
always the top priority**

Development Constraints Identified (in 2013)

Our PC15 Business Plan states

“... it has been necessary to defer upgrades to 81 large WwTW. This will increase the number of sewerage systems which will reach their capacity during the PC15 period.

As a result NI Water will not be able to permit new connections, which may result in development at locations across N Ireland being constrained.”

Wastewater Capacity Constraints

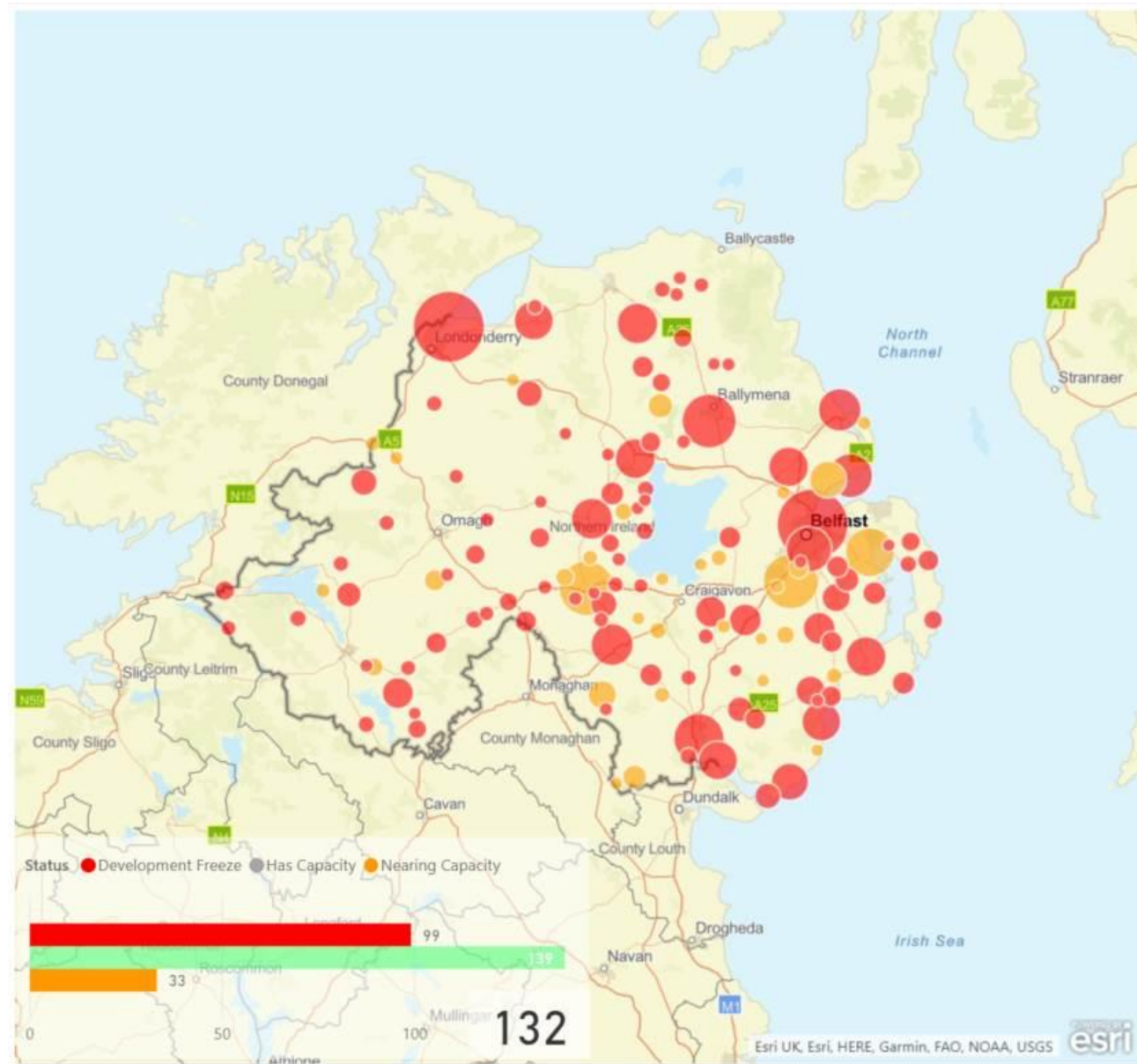
PC21 Business Planning Analysis:

271 larger WWTW and their catchment areas serve c.90% of NI's population

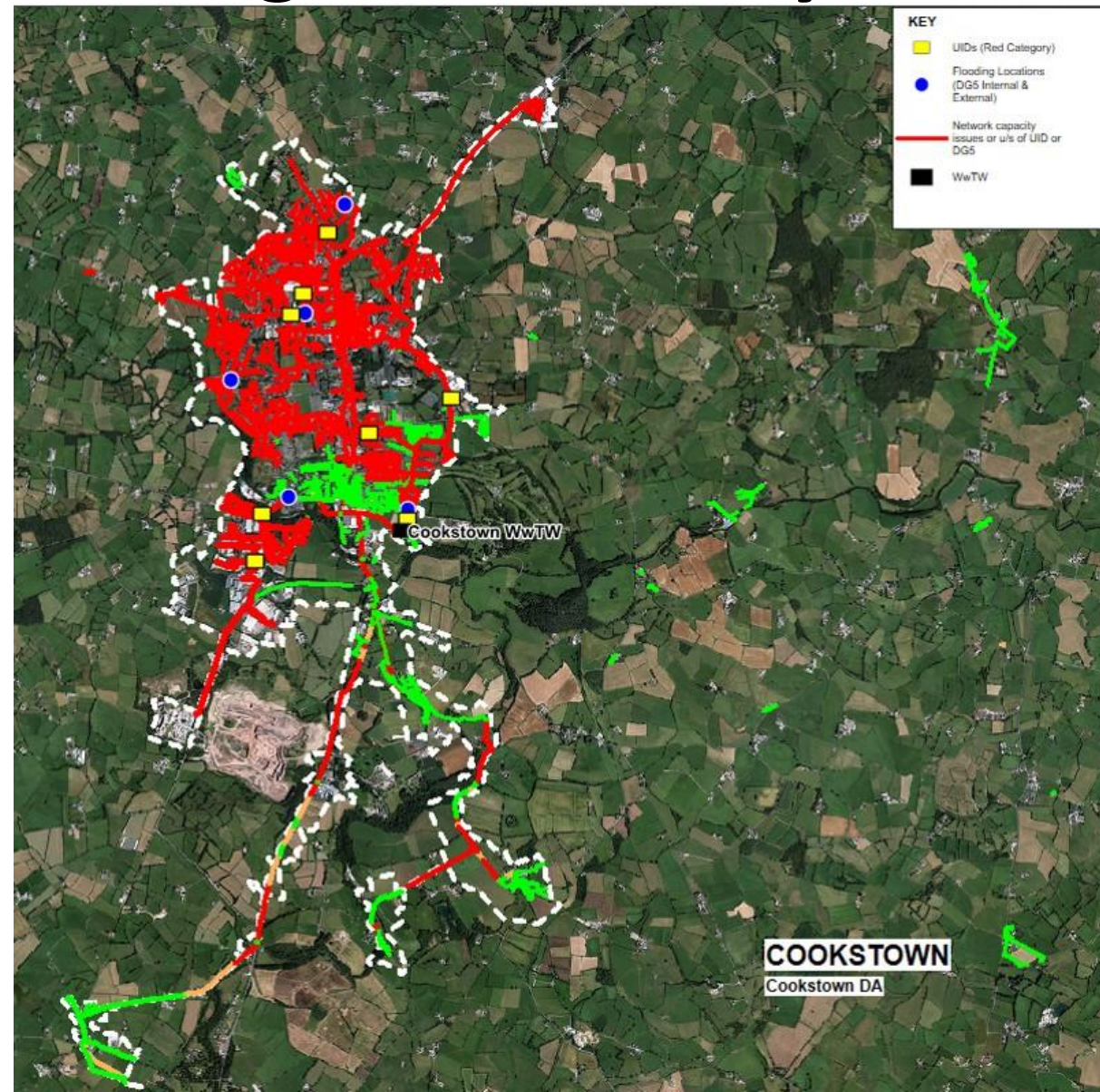
99 are now either at full capacity or fast approaching full capacity or have environmental / operational issues

A further 33 will reach full capacity by 2027

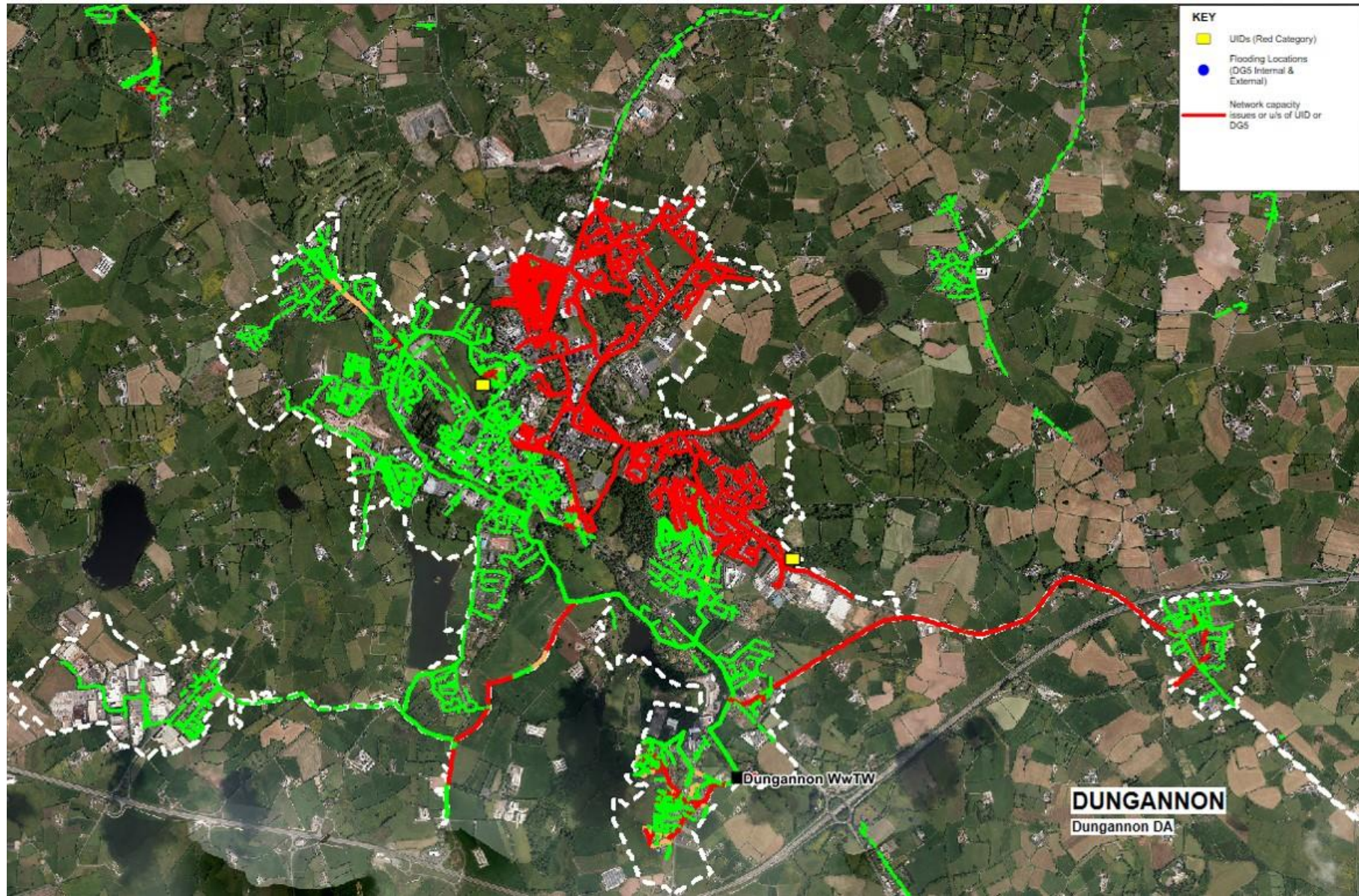
Economic growth, our natural environment and the population's health are at risk



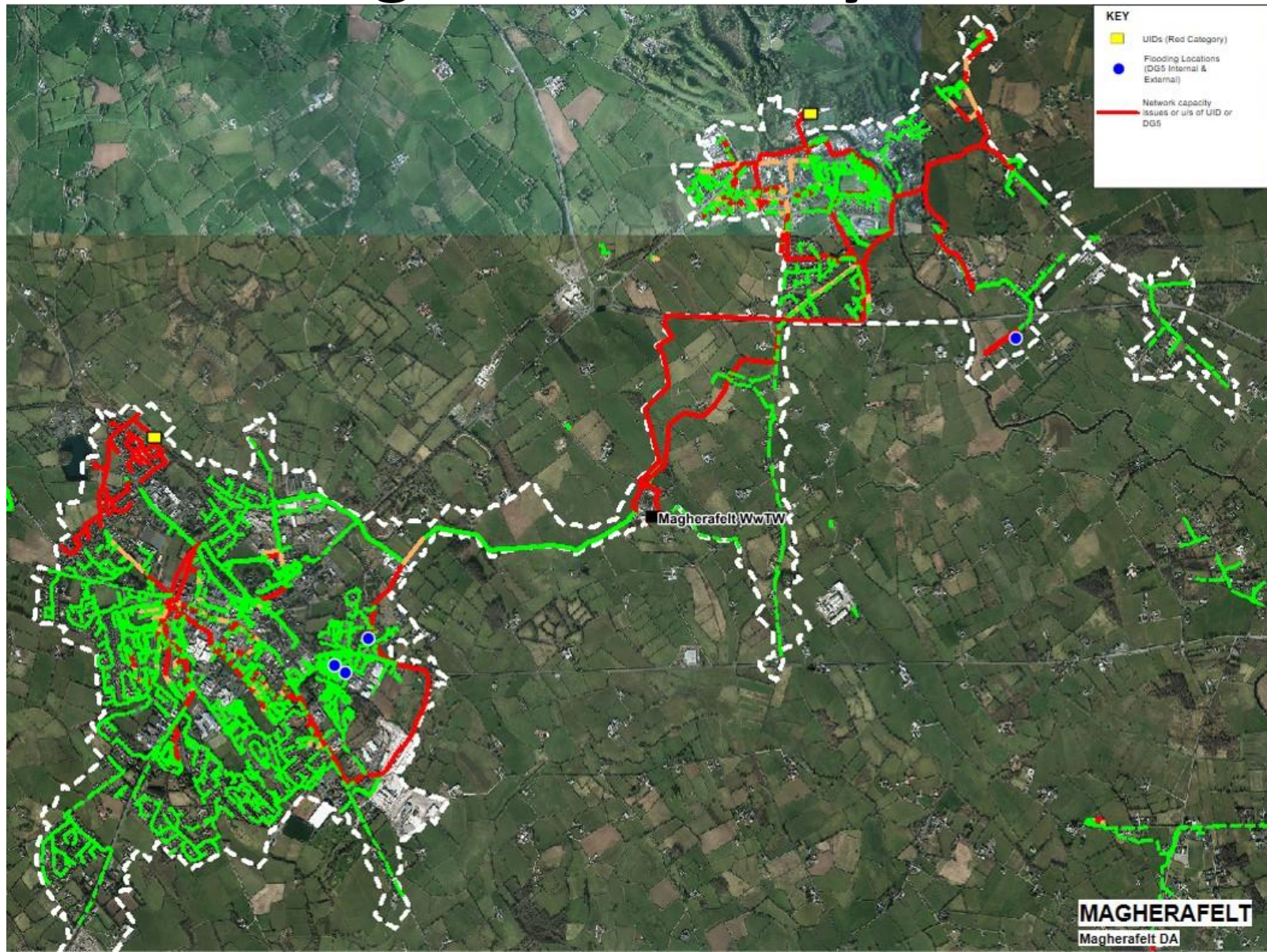
Cookstown Network Capacity Constraints: High Level Analyses



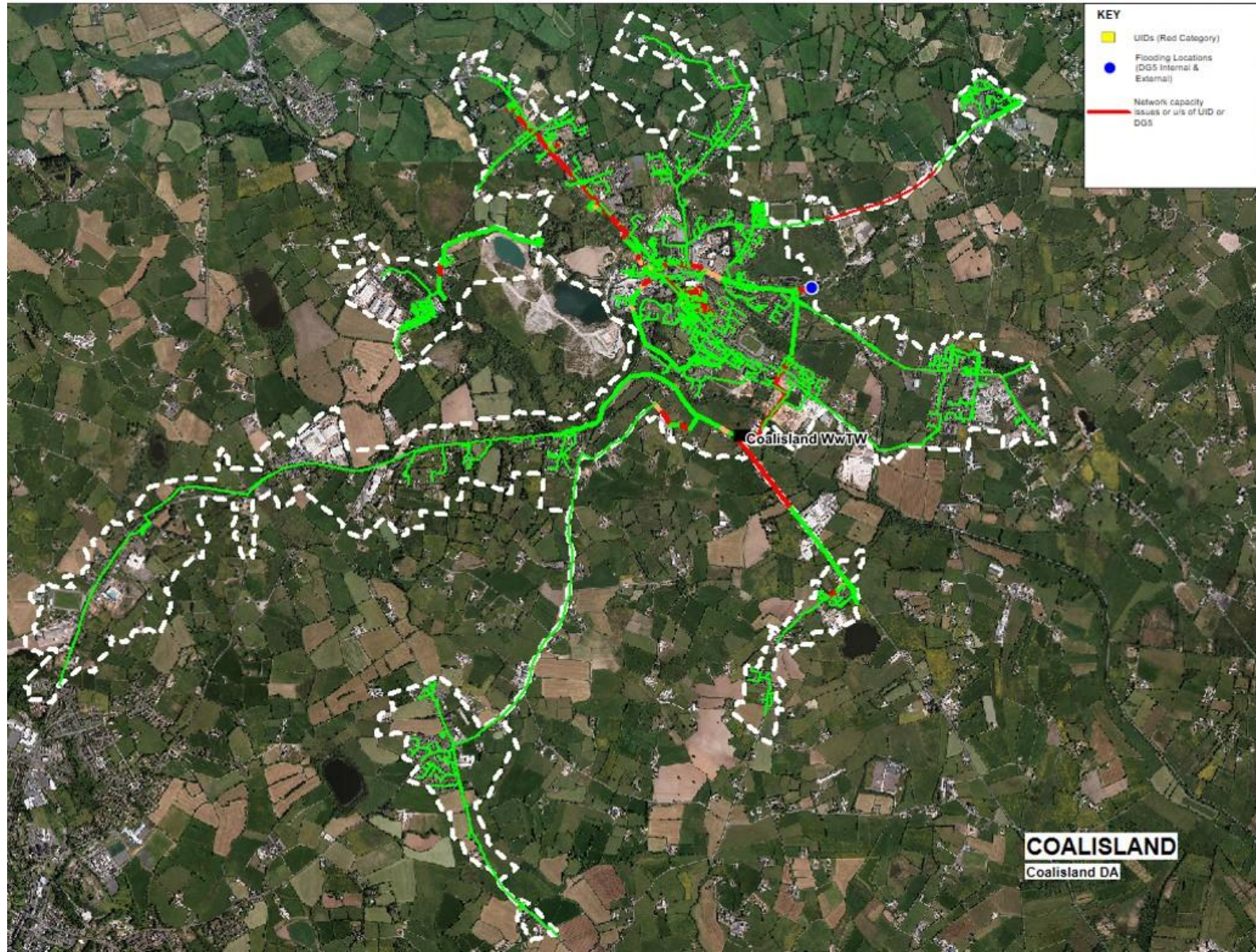
Dungannon Network Capacity Constraints: High Level Analyses



Magherafelt Network Capacity Constraints: High Level Analyses



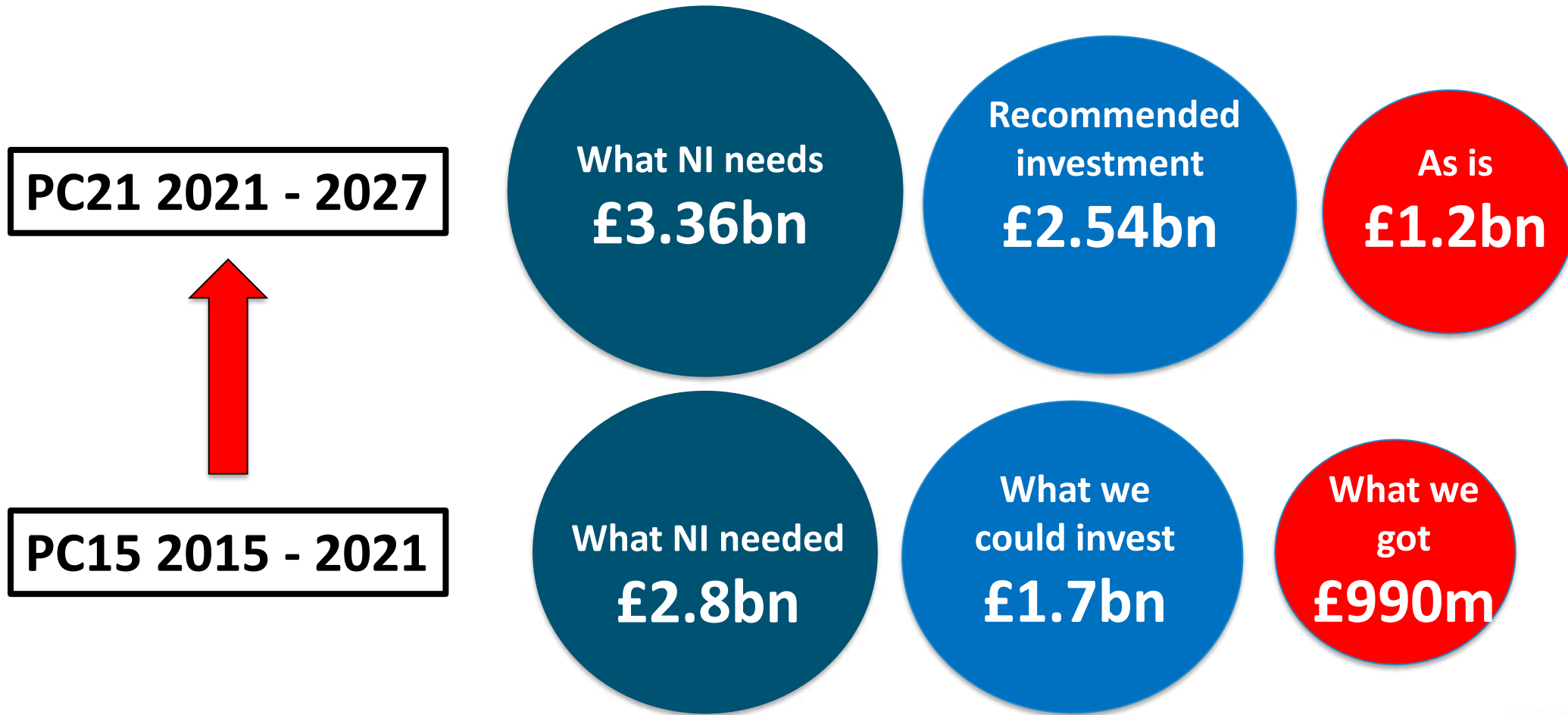
Coalisland Network Capacity Constraints: High Level Analyses



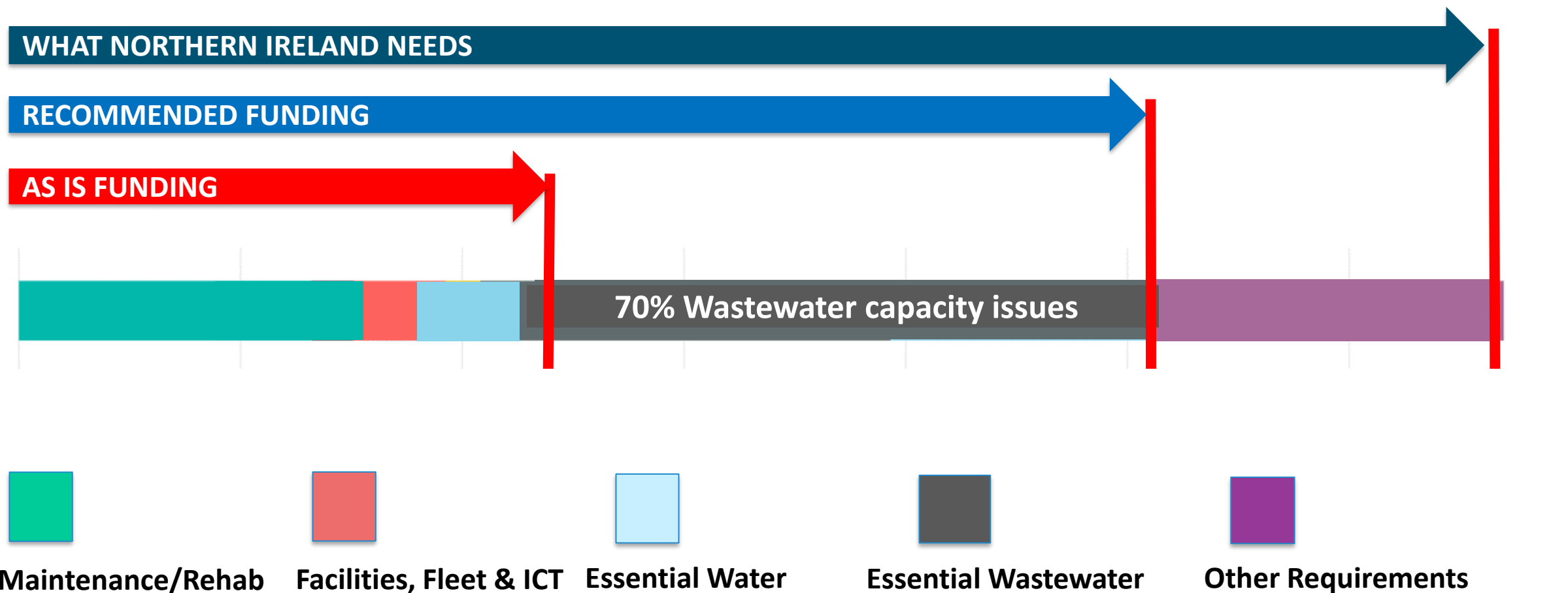
Maghera Network Capacity Constraints: High Level Analyses



Funding is Not Keeping Pace with NI's Needs



Priority of Investment



Supporting Future Economy and Environment

- Significant investment is needed for wastewater and water infrastructure
- NI Water's current governance model is broken, to date it hasn't delivered the investment that Northern Ireland needs
- NI Water knows Northern Ireland's growth ambitions, we know what needs done and we have the plan and the skills to deliver it
- If funding continues at current levels there will be significant constraints on economic growth, damage to the environment and risk to people's health

THANK YOU

