



Social Enterprise NI

Amanda Johnston & David Arthurs
Social Enterprise NI

16th January 2020



Social Enterprise NI

Our Mission & Vision

MISSION

To be the voice of Social Enterprise across Northern Ireland, connecting, supporting, developing and sustaining vibrant businesses to create social change.

VISION

Social Enterprise is recognised and valued as a business model through which society profits.

Activity Update



Social Enterprise NI

- **Social Economy Policy Group**
- **National Social Enterprise Policy for Ireland 2019/22**
- **Submitted Response to DUP Economic Pre-Consultation**
- **Attended Sinn Fein New Economic Strategy Policy Launch and Roundtable**
- **Perm Secs of Finance, Education & Senior Economy Officials**
- **Cabinet Office Meeting re Social Value Legislation Updates England & Wales**
- **Dormant Accounts and Ongoing dialogue around Social Value in Procurement**
- **Belfast Metropolitan College Programme**
- **Private & Public Sector Meetings and Membership**
- **Awards Evening**
- **SEUPB visits to Rol and Scotland & Belfast**



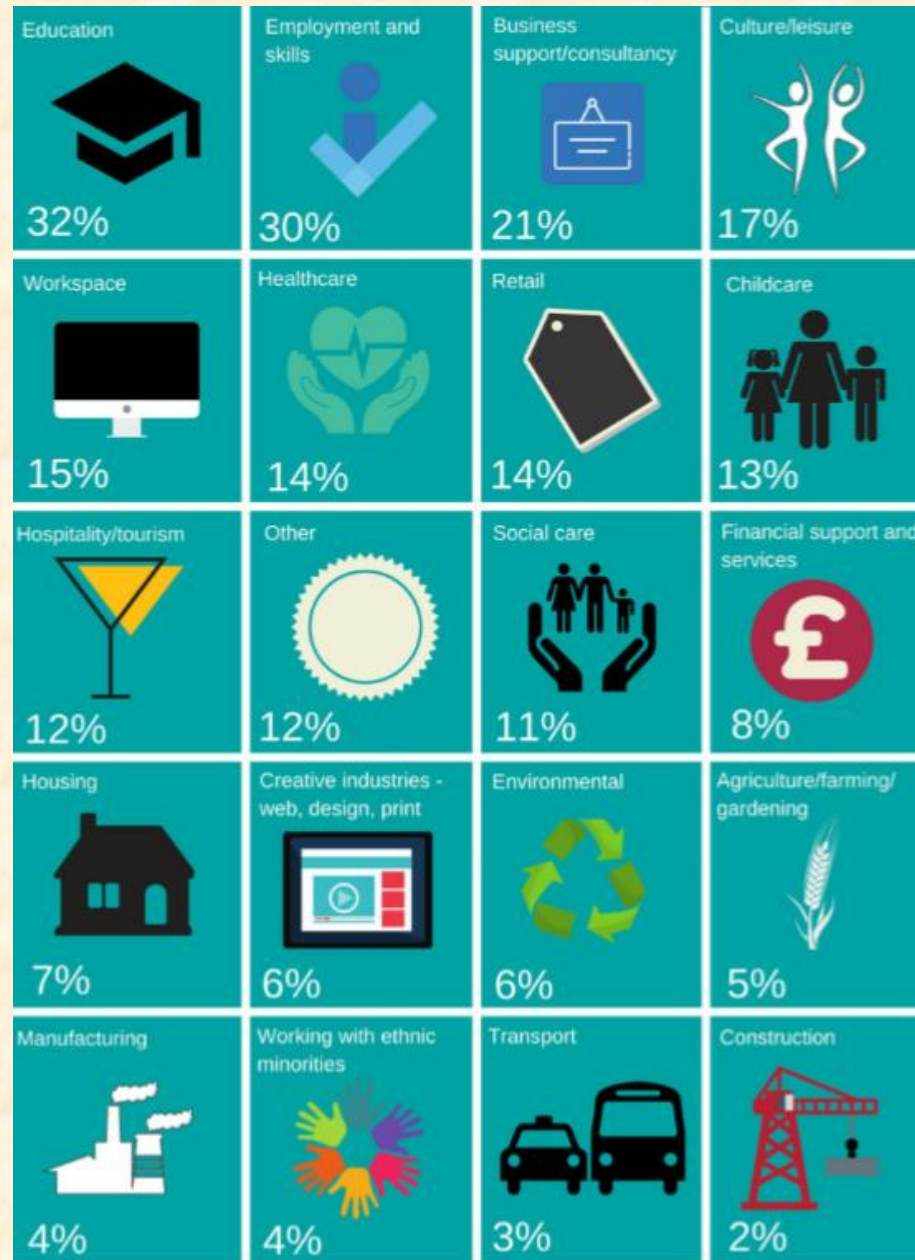
Social Enterprise NI

What is the Economic Contribution of SE's

	2013	2018
Organisations	473	843
Employees	12,200	24,860
Turnover (£Million)	592.7	980
Economic Contribution (£Million)	N/A	625



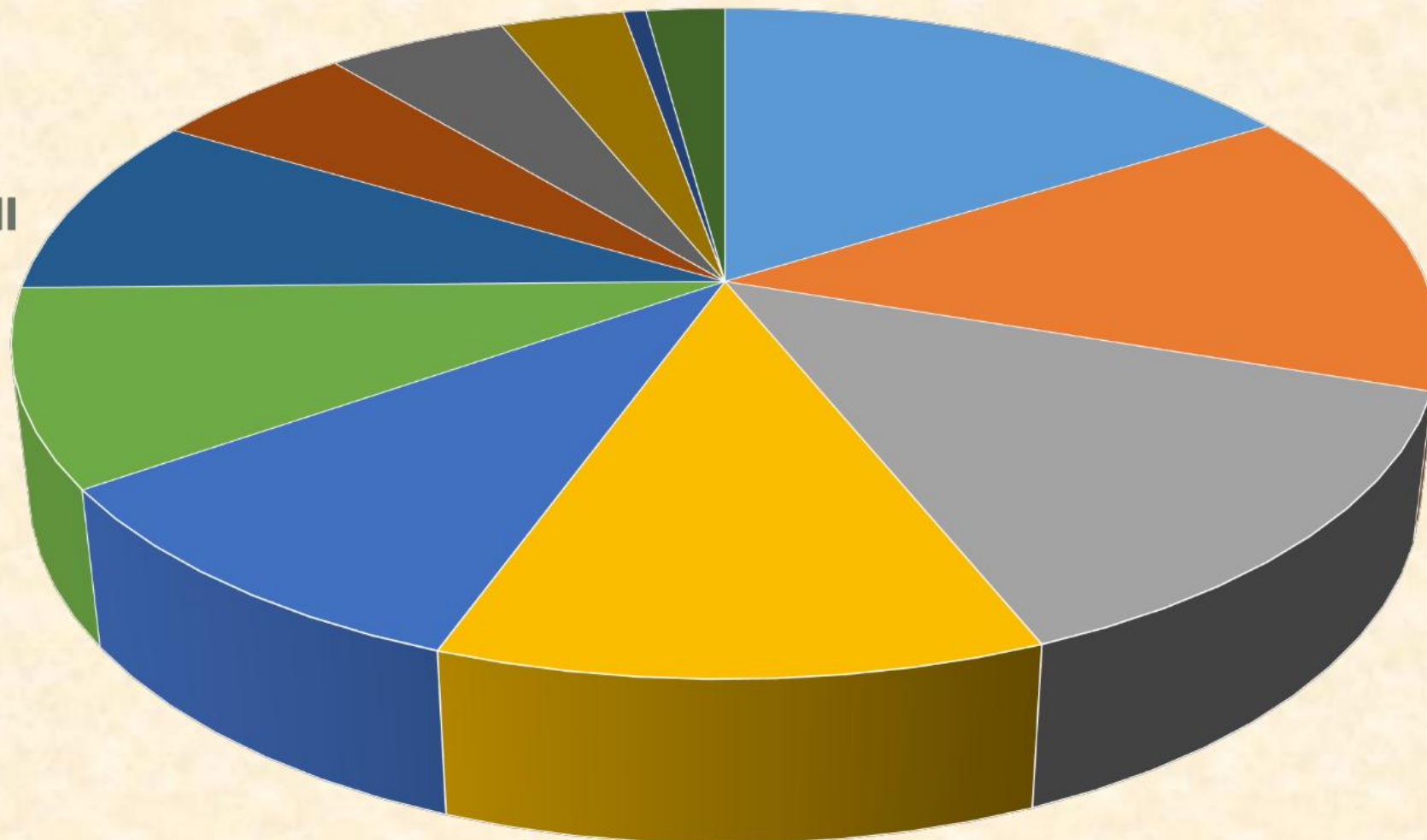
Social Enterprise NI



*This was a multiple choice question therefore figures do not add up to 100%



Social Enterprise NI



■ Creating employment

■ Addressing social exclusion

■ Supporting children and young people

■ Addressing financial exclusion

■ Improving health and wellbeing

■ Supporting other organisations

■ Promoting education & literacy

■ Providing affordable housing

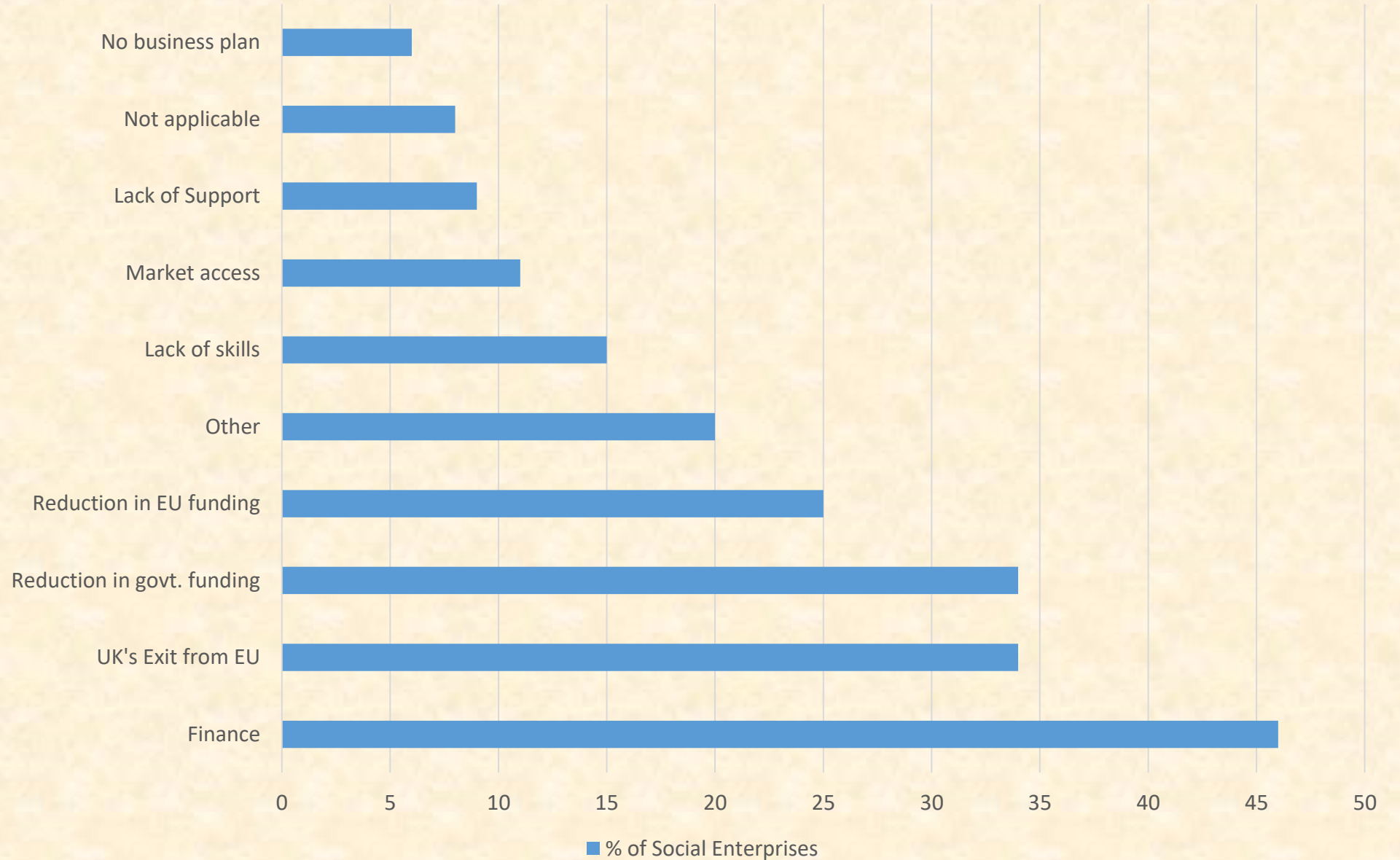
■ Community enhancement

■ Supporting vulnerable people

■ Environmental improvement

■ Other

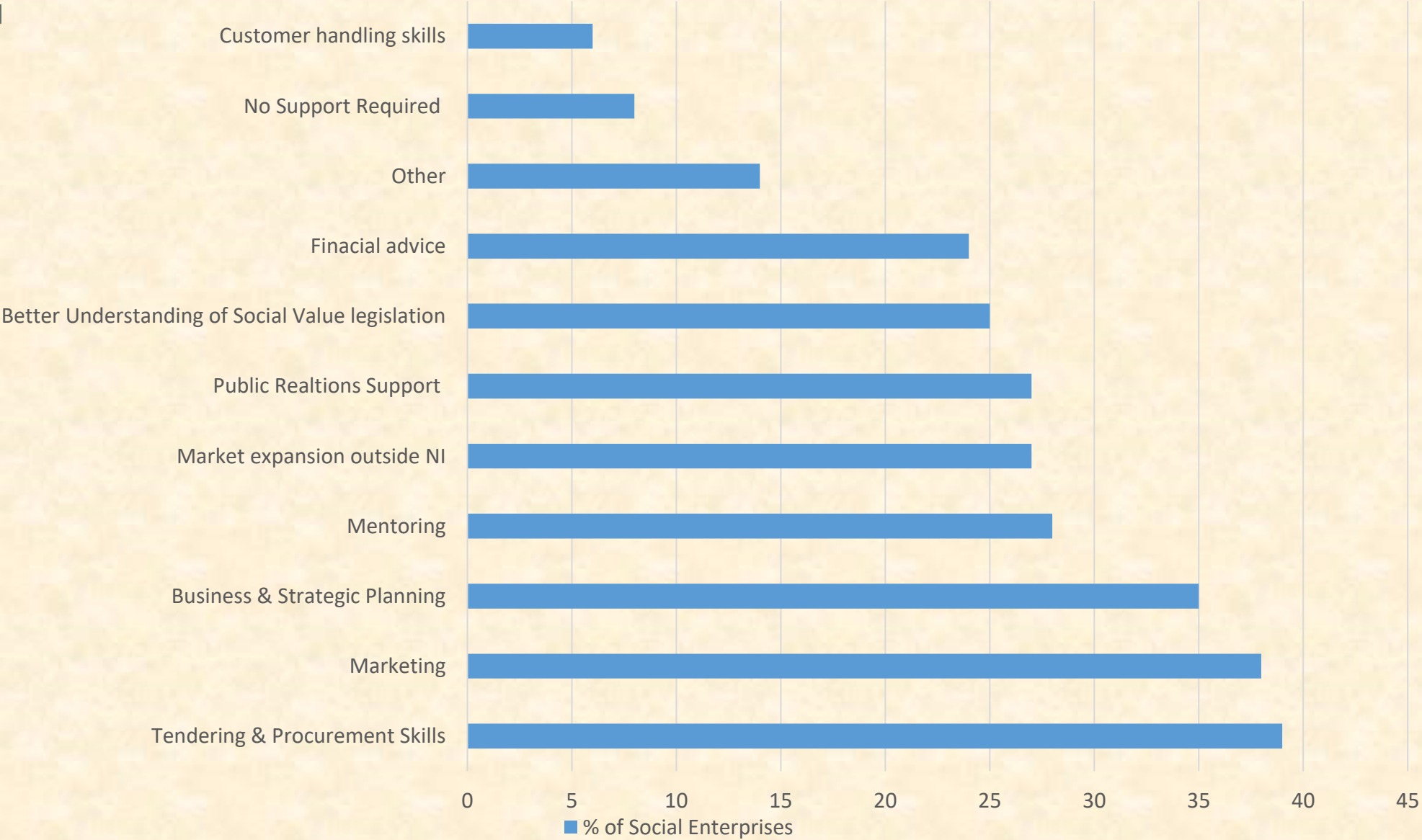
SOCIAL ENTERPRISE BARRIERS





Social Enterprise NI

SOCIAL ENTERPRISE ENABLERS





Social Enterprise NI

THANK YOU