

Education Authority

Gregory Butler

Regional Managing Director

Southern and South Eastern Region

with

**Strategic Responsibility for Area Planning
across the Education Authority**

Education Authority Investment Plans and Delivery of Services within the District of Mid Ulster.

Context

1 April 2015

**5 Education and Library Boards
to
1 Education Authority.**

Context

Major Focus during Transition

Continuity of Front Line Services

Context

April 2016

New Directors take up post

**Move from Regions to Functional
Responsibility**

Services

- ▶ **Schools**
- ▶ **Youth Services**
- ▶ **Music Services**
- ▶ **Range of Support Services including:**
 - Educational Welfare
 - Transport
 - Special Education
 - School Meals
 - Area Planning
 - Maintenance, Major and Minor Works

Mid Ulster Council Area

Details of Primary Schools

Management type	Numbers of schools	Total current enrolments (Y1 – Y7)	Total approved enrolment (Reception – Y7)
Controlled	34	4067	5417
Catholic Maintained	59	9632	11333
Other Maintained	6	408	488
Grant Maintained Integrated	3	596	616

Mid Ulster Council Area

Details of Post-Primary Schools

Management type	Numbers of schools	Total current enrolments	Total approved enrolment
Controlled	5	2254	2857
Catholic Maintained	8	5759	5870
Voluntary	5	4520	4420
Grant Maintained Integrated	2	1044	1000

Mid Ulster Council Area

Details of Post-Primary Schools

Management type	Total current enrolments Yrs 8 –12	Total current enrolments Sixth Form	Total approved enrolment
Controlled	1 928	326	2 254
Catholic Maintained	4 610	1 149	5 759
Voluntary	3 280	1 240	4 520
Grant Maintained Integrated	854	190	1 044

P1 to P7 Enrolment

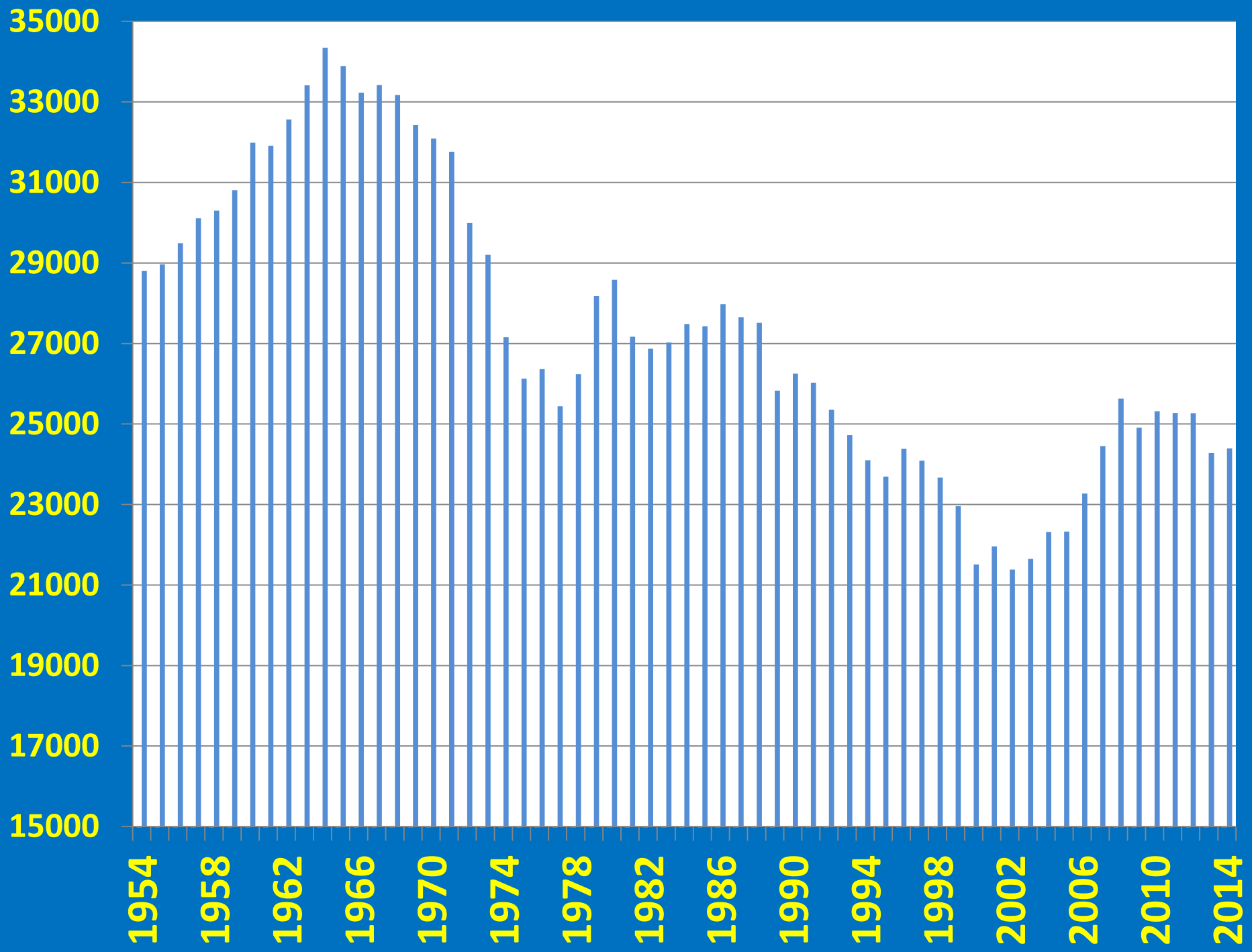
P1-P7 Enrol	Controlled	Catholic Maintained	Grant Maintained Integrated	Other Maintained	Totals
less than 25	0	1	0	1	2
less than 50	6	8	0	3	17
less than 75	12	13	0	4	29
less than 100	19	20	0	5	44
less than 125	23	31	0	5	59
less than 150	24	32	0	5	61
less than 175	27	40	0	6	73
less than 200	30	47	2	6	85
less than 300	33	54	3	6	96
less than 400	33	55	3	6	97
less than 500	34	55	3	6	98
greater than 500	0	4	0	0	4
Totals	34	59	3	6	102

Post Primary Yrs 8 to 12 Enrol

Yrs 8-12 Enrol	Controlled	Catholic Maintained	Voluntary	Grant Maintained Integrated	Total
less than 100	0	0	0	0	0
less than 200	1	0	0	0	1
less than 300	2	1	0	0	3
less than 400	3	3	0	0	6
less than 500	4	3	1	2	10
less than 600	4	4	3	2	13
less than 700	5	5	3	2	15
less than 800	5	6	4	2	17
less than 900	5	7	4	2	18
less than 1000	5	8	5	2	20
Totals	5	8	6	2	134







Post 16 – Enrolment

	Controlled	Catholic Maintained	Voluntary	Grant Maintained Integrated	Total
Schools with no Sixth Form	1	1	0	0	2
Sixth Form Enrolment					
less than 25	1	0	0	0	1
less than 50	1	0	0	0	1
less than 75	2	1	0	0	3
less than 100	3	2	1	0	6
less than 125	3	3	2	0	8
less than 150	3	4	2	0	9
less than 175	4	4	2	1	11
less than 200	4	6	2	3	15
less than 300	4	6	2	4	16
greater than 300	0	1	0	1	2
Totals	5	8	2	5	20



“Schools for the Future: A Policy for Sustainable Schools”

6 Criteria:

-  **Quality Educational Experience;**
-  **Stable Enrolment Trends;**
-  **Sound Financial Position;**
-  **Strong Leadership and Management by Boards of Governors and Principals;**
-  **Accessibility;**
-  **Strong links with the Community.**

Quality Educational Experience

Other factors driving need for Area Planning:



Examination Results;



Entitlement Framework ;



24 Courses – Key Stage 4;



27 Courses – Post 16;



Increasing numbers undertaking Post 16;



Size of School / Learning Community to meet these requirements;



Equality of access to provision.

Challenges for EA

**Develop with other stakeholders by July 2016
Area Plans for:**

- **Primary**
- **Post-Primary**
- **Special Education.**

Plans are required to reflect full consideration of all schools with sustainability issues and evidence the support or action being taken to address these.

Challenges for EA

How do we develop a strategic rather than piecemeal approach to implementation of Sustainable Schools Policy across Northern Ireland?

Challenges for EA

How do we develop our strategic position/view on the implementation of Sustainable Schools Policy?

- **Desirable/Achievable size and nature of Post-16 provision to ensure equality of access and appropriate progression routes for all young people.**
- **Desirable/Achievable size of post-primary to facilitate delivery of curriculum an Entitlement Framework.**
- **Desirable/Achievable size of primary school**